

Anti-Gli3 antibody (1301-1580) [S4MR] (STJ11103514)

GENERAL INFORMATION

Product Type	Primary antibodies
Applications	WB/IF/ICC/ELISA
Host / Source	Rabbit
Reactivity	Human/Mouse/Rat

PRODUCT PROPERTIES

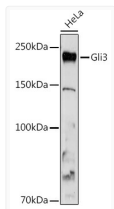
Clonality	Monoclonal
Concentration	Lot specific
Conjugation	Unconjugated
Purification	Affinity purification
Dilution Range	WB:1:500-1:1000 IF/CC:1:50-1:200 ELISA:Recommended starting concentration is 1 μ g/mL. Please optimize the concentration based on your specific assay requirements.
Formulation	PBS with 0.02% Sodium Azide, 0.05% BSA, 50% Glycerol, pH 7.3.
Isotype	IgG
Molecular Weight	Protein Mw: 170kDa Observed Mw: 190kDa
Storage Instruction	Store at -20°C for up to 1 year from the date of receipt, and avoid repeat freeze-thaw cycles.

TARGET INFORMATION

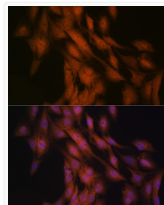
Gene ID	2737
Gene Symbol	GLI3
UniProt ID	GLI3_HUMAN
Immunogen Region	1301-1580
Immunogen Sequence	PNESAGSMVNGMQNDPVGQ GYLAHQLLGDSMQHPGAGRP GQQMLGQISATSHINIYQGP ESCLPGAHGMSGPSSLAVV RGYQPCASFGGSRQAMP RD SLALQSGQLSDTSQTCRVNG IKMEMKGQPHPLCSNLQNY S GQFYDQTVGFSSQDQTKAGSF SISDASCLLQGTSAKNSSELL SPGANQVTSTVDSLDSHDL E GVQIDFDAIIDDGDHSSLMS GALSPSIQNLSSHSSRLT
Specificity	Recombinant fusion protein containing a sequence corresponding to amino acids 1301-1580 of human Gli3 (P10071).

ADDITIONAL INFORMATION

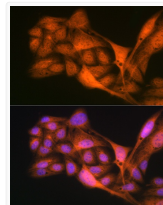
Note STRICTLY FOR FURTHER SCIENTIFIC RESEARCH USE ONLY (RUO). MUST NOT TO BE USED IN DIAGNOSTIC OR THERAPEUTIC APPLICATIONS.



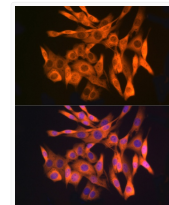
Western blot analysis of extracts of HeLa cells, using Gli3 antibody (STJ11103514) at 1:1000 dilution. Secondary antibody: HRP Goat Anti-rabbit IgG (H+L) (STJS000856) at 1:10000 dilution. Lysates/proteins: 25 μ g per lane. Blocking buffer: 3% non-fat dry milk in TBST. Detection: ECL Basic Kit. Exposure time: 180s.



Immunofluorescence analysis of C6 cells using Gli3 rabbit monoclonal antibody (STJ11103514) at dilution of 1:100 (40x lens). Blue: DAPI for nuclear staining.



Immunofluorescence analysis of U-2 OS cells using Gli3 rabbit monoclonal antibody (STJ11103514) at dilution of 1:100 (40x lens). Blue: DAPI for nuclear staining.



Immunofluorescence analysis of NIH/3T3 cells using Gli3 rabbit monoclonal antibody (STJ11103514) at dilution of 1:100 (40x lens). Blue: DAPI for nuclear staining.