

Anti-IL15RA antibody (167-267) (STJ11103511)

GENERAL INFORMATION

Product Type	Primary antibodies
Applications	WB/IF/ICC/ELISA
Host / Source	Rabbit
Reactivity	Human/Mouse/Rat

PRODUCT PROPERTIES

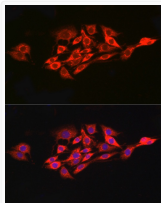
Clonality	Polyclonal
Concentration	Lot specific
Conjugation	Unconjugated
Purification	Affinity purification
Dilution Range	WB:1:500-1:1000 IF/CC:1:50-1:200 ELISA:Recommended starting concentration is 1 Mu g/mL. Please optimize the concentration based on your specific assay requirements.
Formulation	PBS with 0.05% Proclin300, 50% Glycerol, pH 7.3.
Isotype	IgG
Molecular Weight	Protein Mw: 28kDa Observed Mw: 60kDa
Storage Instruction	Store at -20°C for up to 1 year from the date of receipt, and avoid repeat freeze-thaw cycles.

TARGET INFORMATION

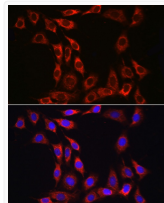
Gene ID	3601
Gene Symbol	IL15RA
UniProt ID	I15RA_HUMAN
Immunogen Region	167-267
Immunogen Sequence	SHESSHGTPSQTTAKNWELT ASASHQPPGVYPQGHSDTTV AISTSTVLLCGLSAVLLAC YLKSRTQTPPLASVEMEAMEA LPVTWGTSSRDELDLENCSHH L
Specificity	Recombinant fusion protein containing a sequence corresponding to amino acids 167-267 of human CD215/IL-15R alpha (NP_002180.1).

ADDITIONAL INFORMATION

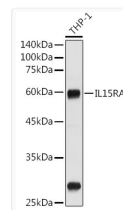
Note STRICTLY FOR FURTHER SCIENTIFIC RESEARCH USE ONLY (RUO). MUST NOT TO BE USED IN DIAGNOSTIC OR THERAPEUTIC APPLICATIONS.



Immunofluorescence analysis of PC-12 cells using CD215/IL-15R alpha Rabbit polyclonal antibody (STJ11103511) at dilution of 1:100 (40x lens). Blue: DAPI for nuclear staining.



Immunofluorescence analysis of NIH/3T3 cells using CD215/IL-15R alpha Rabbit polyclonal antibody (STJ11103511) at dilution of 1:100 (40x lens). Blue: DAPI for nuclear staining.



Western blot analysis of extracts of THP-1 cells, using CD215/IL-15R alpha antibody (STJ11103511) at 1:1000 dilution. Secondary antibody: HRP Goat Anti-Rabbit IgG (H+L) (STJS000856) at 1:10000 dilution. Lysates/proteins: 25 Mu g per lane. Blocking buffer: 3% nonfat dry milk in TBST. Detection: ECL Basic Kit. Exposure time: 180s.