

Anti-MEF2A+MEF2C antibody (250-473) [S4MR] (STJ11103504)

GENERAL INFORMATION

Product Type	Primary antibodies
Applications	WB/IHC-P/ELISA
Host / Source	Rabbit
Reactivity	Human/Mouse

PRODUCT PROPERTIES

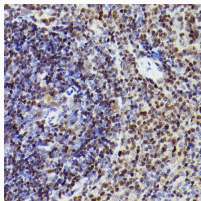
Clonality	Monoclonal
Concentration	Lot specific
Conjugation	Unconjugated
Purification	Affinity purification
Dilution Range	WB:1:500-1:1000 IHC-P:1:50-1:200 ELISA:Recommended starting concentration is 1 µg/mL. Please optimize the concentration based on your specific assay requirements.
Formulation	PBS with 0.02% Sodium Azide, 0.05% BSA, 50% Glycerol, pH 7.3.
Isotype	IgG
Molecular Weight	Protein Mw: 51kDa Observed Mw: 51kDa/54kDa
Storage Instruction	Store at -20°C for up to 1 year from the date of receipt, and avoid repeat freeze-thaw cycles.

TARGET INFORMATION

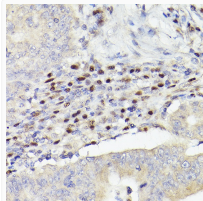
Gene ID	4208 4205
Gene Symbol	MEF2C MEF2A
UniProt ID	MEF2C_HUMAN MEF2A_HUMAN
Immunogen Region	250-473
Immunogen Sequence	NRKPDRLRVLIPPGSKNTMPS VSEDVDLLLNRINNSQSAQ SLATPVVSVATPTLPGQGMG GYPSAISTTYGTEYSLSSAD LSSLGGFNTASALHLG SVTG WQQQHLHNMPPSALSQLGAC TSTHLSQSSNLSLPSTQSLN IKSEPVSPPRDRITTPSRYP QHTRHEAGRSPVDSLSSCSS SYDGS DREDHRNEFHSPIGL TRPSPDERESPVKRMLSE GWAT
Specificity	Recombinant fusion protein containing a sequence corresponding to amino acids 250-473 of human MEF2A+MEF2C (Q06413).

ADDITIONAL INFORMATION

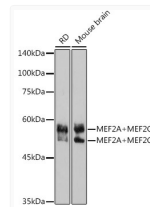
Note STRICTLY FOR FURTHER SCIENTIFIC RESEARCH USE ONLY (RUO). MUST NOT TO BE USED IN DIAGNOSTIC OR THERAPEUTIC APPLICATIONS.



Immunohistochemistry analysis of paraffin-embedded mouse spleen using MEF2A+MEF2C Rabbit monoclonal antibody (STJ11103504) at dilution of 1:100 (40x lens). Perform high pressure antigen retrieval with 10 mM citrate buffer pH 6.0 before commencing with immunohistochemistry staining protocol.



Immunohistochemistry analysis of paraffin-embedded human colon carcinoma using MEF2A+MEF2C Rabbit monoclonal antibody (STJ11103504) at dilution of 1:100 (40x lens). Perform high pressure antigen retrieval with 10 mM citrate buffer pH 6.0 before commencing with immunohistochemistry staining protocol.



Western blot analysis of extracts of various cell lines, using MEF2A+MEF2C antibody (STJ11103504) at 1:1000 dilution. Secondary antibody: HRP Goat Anti-Rabbit IgG (H+L) (STJS000856) at 1:10000 dilution. Lysates/proteins: 25 µg per lane. Blocking buffer: 3% nonfat dry milk in TBST. Detection: ECL Basic Kit. Exposure time: 90s.