

Anti-Cyclin A1/A2 antibody (250-465) [S8MR] (STJ11103498)

GENERAL INFORMATION

Product Type	Primary antibodies
Applications	WB/IP/ELISA
Host / Source	Rabbit
Reactivity	Human/Mouse

PRODUCT PROPERTIES

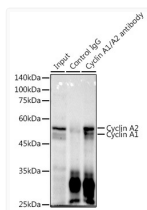
Clonality	Monoclonal
Concentration	Lot specific
Conjugation	Unconjugated
Purification	Affinity purification
Dilution Range	WB:1:500-1:1000 IP:0.5 Mu g-4 Mu g antibody for 400 Mu g-600 Mu g extracts of whole cells ELISA:Recommended starting concentration is 1 Mu g/mL. Please optimize the concentration based on your specific assay requirements.
Formulation	PBS with 0.02% Sodium Azide, 0.05% BSA, 50% Glycerol, pH 7.3.
Isotype	IgG
Molecular Weight	Protein Mw: 52kDa/49kDa Observed Mw: 52kDa/55kDa
Storage Instruction	Store at -20°C for up to 1 year from the date of receipt, and avoid repeat freeze-thaw cycles.

TARGET INFORMATION

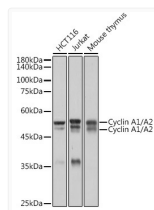
Gene ID	8900 890
Gene Symbol	CCNA1 CCNA2
UniProt ID	CCNA1_HUMAN CCNA2_HUMAN
Immunogen Region	250-465
Immunogen Sequence	RGKLQLVGTAAMLLASKFEE IYPPEVAEFVYITDDTYTKK QVLRMEHLVLKVLTFDLAAP TVNQFLTQYFLHQQPANCKV ESLAMFLGELSLIDADPYLK YLPSVIAGAAFHLLALYTVTG QSWPESLIRKTYTLES LKP CLMDLHQTYLKAPQHAQQSI REKYKNSKYHGVSLNPPET LNL
Specificity	Recombinant fusion protein containing a sequence corresponding to amino acids 250-465 of human Cyclin A1/A2 (P20248).

ADDITIONAL INFORMATION

Note STRICTLY FOR FURTHER SCIENTIFIC RESEARCH USE ONLY (RUO). MUST NOT TO BE USED IN DIAGNOSTIC OR THERAPEUTIC APPLICATIONS.



Immunoprecipitation analysis of 600 Mu g extracts of Mouse thymus using 3 Mu g Cyclin A1/A2 antibody (STJ11103498). Western blot was performed from the immunoprecipitate using Cyclin A1/A2 antibody (STJ11103498) at a dilution of 1:1000.



Western blot analysis of various lysates using Cyclin A1/A2 Rabbit monoclonal antibody (STJ11103498) at 1:1000 dilution. Secondary antibody: HRP Goat Anti-Rabbit IgG (H+L) (STJS000856) at 1:10000 dilution. Lysates/proteins: 25 Mu g per lane. Blocking buffer: 3% nonfat dry milk in TBST. Detection: ECL Basic Kit. Exposure time: 1s.