

Anti-Cytokeratin 2e antibody (293-422) [S7MR] (STJ11103497)

GENERAL INFORMATION

Product Type	Primary antibodies
Applications	WB/IHC-P/IF/ICC/ELISA
Host / Source	Rabbit
Reactivity	Human/Mouse/Rat

PRODUCT PROPERTIES

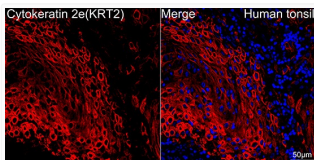
Clonality	Monoclonal
Concentration	Lot specific
Conjugation	Unconjugated
Purification	Affinity purification
Dilution Range	WB:1:500-1:1000 IHC-P:1:50-1:200 IF/ICC:1:50-1:200 ELISA:Recommended starting concentration is 1 µg/mL. Please optimize the concentration based on your specific assay requirements.
Formulation	PBS with 0.02% Sodium Azide, 0.05% BSA, 50% Glycerol, pH 7.3.
Isotype	IgG
Molecular Weight	Protein Mw: 65kDa Observed Mw: 65kDa
Storage Instruction	Store at -20°C for up to 1 year from the date of receipt, and avoid repeat freeze-thaw cycles.

TARGET INFORMATION

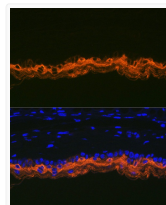
Gene ID	3849
Gene Symbol	KRT2
UniProt ID	K22E_HUMAN
Immunogen Region	293-422
Immunogen Sequence	YMIKVELQSKVDLLNQEIEF LKVLVDAEISQIHQSVDTDN VILSMDNSRNLDLDSIAEV KAQYEEIAQRSKEEAALYH SKYEELQVTVGRHGDSLKEI KIEISELNRVIQRLQGEIAH VKKQCKNVQD
Specificity	Recombinant fusion protein containing a sequence corresponding to amino acids 293-422 of humanKRT2 (P35908).

ADDITIONAL INFORMATION

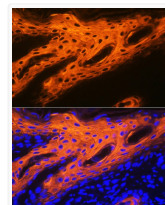
Note **STRICTLY FOR FURTHER SCIENTIFIC RESEARCH USE ONLY (RUO). MUST NOT TO BE USED IN DIAGNOSTIC OR THERAPEUTIC APPLICATIONS.**



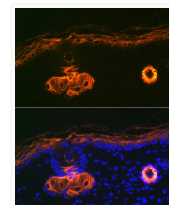
Confocal imaging of paraffin-embedded Human tonsil tissue using Cytokeratin 2e (KRT2) Rabbit monoclonal antibody (STJ11103497, dilution 1:200) followed by a further incubation with Cy3 Goat Anti-Rabbit IgG (H+L) (dilution 1:500) (Red). DAPI was used for nuclear staining (Blue). Objective: 40x. Perform high pressure antigen retrieval with 0.01 M citrate buffer (pH 6.0) prior to IF staining.



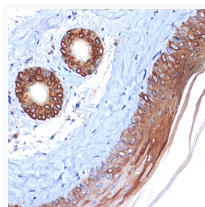
Immunofluorescence analysis of paraffin-embedded mouse skin using Cytokeratin 2e (KRT2) Rabbit monoclonal antibody (STJ11103497) at dilution of 1:100 (40x lens). Secondary antibody: Cy3 Goat Anti-Rabbit IgG (H+L) at 1:500 dilution. Blue: DAPI for nuclear staining.



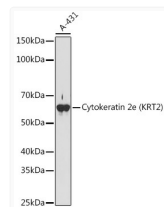
Immunofluorescence analysis of paraffin-embedded human skin using Cytokeratin 2e (KRT2) Rabbit monoclonal antibody (STJ11103497) at dilution of 1:100 (40x lens). Secondary antibody: Cy3 Goat Anti-Rabbit IgG (H+L) at 1:500 dilution. Blue: DAPI for nuclear staining.



Immunofluorescence analysis of paraffin-embedded rat skin using Cytokeratin 2e (KRT2) Rabbit monoclonal antibody (STJ11103497) at dilution of 1:100 (40x lens). Secondary antibody: Cy3 Goat Anti-Rabbit IgG (H+L) at 1:500 dilution. Blue: DAPI for nuclear staining.



Immunohistochemistry analysis of Cytokeratin 2e (KRT2) in paraffin-embedded mouse skin using Cytokeratin 2e (KRT2) Rabbit monoclonal antibody (STJ11103497) at dilution of 1:100 (40x lens). Perform microwave antigen retrieval with 10 mM Tris/EDTA buffer pH 9.0 before commencing with immunohistochemistry staining protocol.



Western blot analysis of lysates from A-431 cells, using Cytokeratin 2e (KRT2) Rabbit monoclonal antibody (STJ11103497) at 1:1000 dilution. Secondary antibody: HRP Goat Anti-Rabbit IgG (H+L) (STJS000856) at 1:10000 dilution. Lysates/proteins: 25 µg per lane. Blocking buffer: 3% nonfat dry milk in TBST. Detection: ECL Basic Kit. Exposure time: 180s.