

Anti-mSin3A antibody (1174-1273) [S9MR] (STJ11103489)

GENERAL INFORMATION

Product Type	Primary antibodies
Applications	WB/IHC-P/IF/ICC/ELISA
Host / Source	Rabbit
Reactivity	Human/Mouse/Rat

PRODUCT PROPERTIES

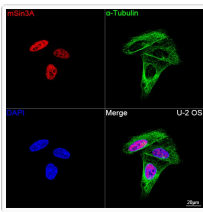
Clonality	Monoclonal
Concentration	Lot specific
Conjugation	Unconjugated
Purification	Affinity purification
Dilution Range	WB:1:500-1:1000 IHC-P:1:50-1:200 IF/CC:1:50-1:200 ELISA:Recommended starting concentration is 1 µg/mL. Please optimize the concentration based on your specific assay requirements.
Formulation	PBS with 0.02% Sodium Azide, 0.05% BSA, 50% Glycerol, pH 7.3.
Isotype	IgG
Molecular Weight	Protein Mw: 145kDa Observed Mw: 145-160kDa
Storage Instruction	Store at -20°C for up to 1 year from the date of receipt, and avoid repeat freeze-thaw cycles.

TARGET INFORMATION

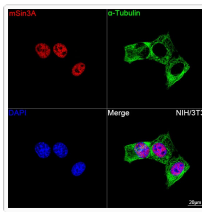
Gene ID	25942
Gene Symbol	SIN3A
UniProt ID	SIN3A_HUMAN
Immunogen Region	1174-1273
Immunogen Sequence	YKMYVVIKSEDMYRRTALL RAHQSHERVSKRLHQRFQAW VDKWTKEHVPREMAAETSKW LMGEGLEGLVPCTTTCDTET LHFVSINKYRVKYGTVFKAP
Specificity	A synthetic peptide corresponding to a sequence within amino acids 1174-1273 of human mSin3A (Q96ST3).

ADDITIONAL INFORMATION

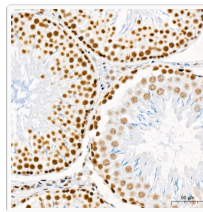
Note	STRICTLY FOR FURTHER SCIENTIFIC RESEARCH USE ONLY (RUO). MUST NOT TO BE USED IN DIAGNOSTIC OR THERAPEUTIC APPLICATIONS.
------	---



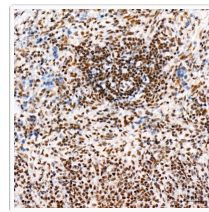
Confocal imaging of U-2 OS cells using mSin3A Rabbit monoclonal antibody (STJ11103489, dilution 1:200) followed by a further incubation with Cy3 Goat Anti-Rabbit IgG (H+L) (dilution 1:500) (Red). The cells were counterstained with Alpha-Tubulin Mouse monoclonal antibody (dilution 1:400) followed by incubation with ABflo® 488-conjugated Goat Anti-Mouse IgG (H+L) antibody (dilution 1:500) (Green). DAPI was used for nuclear staining (Blue). Objective: 100x.



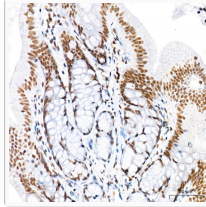
Confocal imaging of NIH/3T3 cells using mSin3A Rabbit monoclonal antibody (STJ11103489, dilution 1:200) followed by a further incubation with Cy3 Goat Anti-Rabbit IgG (H+L) (dilution 1:500) (Red). The cells were counterstained with Alpha-Tubulin Mouse monoclonal antibody (dilution 1:400) followed by incubation with ABflo® 488-conjugated Goat Anti-Mouse IgG (H+L) antibody (dilution 1:500) (Green). DAPI was used for nuclear staining (Blue). Objective: 100x.



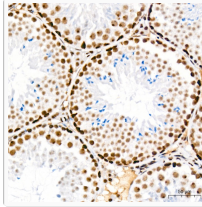
Immunohistochemistry analysis of mSin3A in paraffin-embedded rat testis tissue using mSin3A Rabbit monoclonal antibody (STJ11103489) at a dilution of 1:200 (40x lens). High pressure antigen retrieval was performed with 0.01 M citrate buffer (pH 6.0) prior to immunohistochemistry staining.



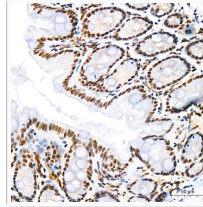
Immunohistochemistry analysis of mSin3A in paraffin-embedded rat spleen tissue using mSin3A Rabbit monoclonal antibody (STJ11103489) at a dilution of 1:200 (40x lens). High pressure antigen retrieval was performed with 0.01 M citrate buffer (pH 6.0) prior to immunohistochemistry staining.



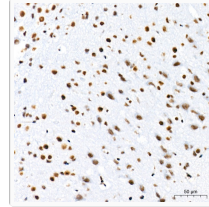
Immunohistochemistry analysis of mSin3A in paraffin-embedded rat colon tissue using mSin3A Rabbit monoclonal antibody (STJ11103489) at a dilution of 1:200 (40x lens). High pressure antigen retrieval was performed with 0.01 M citrate buffer (pH 6.0) prior to immunohistochemistry staining.



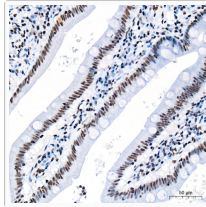
Immunohistochemistry analysis of mSin3A in paraffin-embedded mouse testis tissue using mSin3A Rabbit monoclonal antibody (STJ11103489) at a dilution of 1:200 (40x lens). High pressure antigen retrieval was performed with 0.01 M citrate buffer (pH 6.0) prior to immunohistochemistry staining.



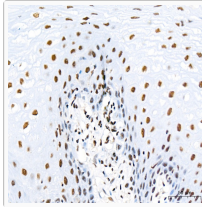
Immunohistochemistry analysis of mSin3A in paraffin-embedded mouse colon tissue using mSin3A Rabbit monoclonal antibody (STJ11103489) at a dilution of 1:200 (40x lens). High pressure antigen retrieval was performed with 0.01 M citrate buffer (pH 6.0) prior to immunohistochemistry staining.



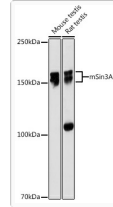
Immunohistochemistry analysis of mSin3A in paraffin-embedded mouse brain tissue using mSin3A Rabbit monoclonal antibody (STJ11103489) at a dilution of 1:200 (40x lens). High pressure antigen retrieval was performed with 0.01 M citrate buffer (pH 6.0) prior to immunohistochemistry staining.



Immunohistochemistry analysis of mSin3A in paraffin-embedded human small intestine tissue using mSin3A Rabbit monoclonal antibody (STJ11103489) at a dilution of 1:200 (40x lens). High pressure antigen retrieval was performed with 0.01 M citrate buffer (pH 6.0) prior to immunohistochemistry staining.



Immunohistochemistry analysis of mSin3A in paraffin-embedded human esophagus tissue using mSin3A Rabbit monoclonal antibody (STJ11103489) at a dilution of 1:200 (40x lens). High pressure antigen retrieval was performed with 0.01 M citrate buffer (pH 6.0) prior to immunohistochemistry staining.



Western blot analysis of various lysates using mSin3A Rabbit monoclonal antibody (STJ11103489) at 1:1000 dilution. Secondary antibody: HRP Goat Anti-Rabbit IgG (H+L) (STJS000856) at 1:10000 dilution. Lysates/proteins: 25 µg per lane. Blocking buffer: 3% nonfat dry milk in TBST. Detection: ECL Basic Kit. Exposure time: 30s.