

## Anti-MRP1/ABCC1 antibody (210-304) [S9MR] (STJ11103479)

### GENERAL INFORMATION

|               |                    |
|---------------|--------------------|
| Product Type  | Primary antibodies |
| Applications  | WB/IHC-P/ELISA     |
| Host / Source | Rabbit             |
| Reactivity    | Human/Mouse/Rat    |

### PRODUCT PROPERTIES

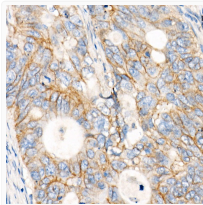
|                     |  |
|---------------------|--|
| Clonality           | Monoclonal   |
| Concentration       | Lot specific   |
| Conjugation         | Unconjugated   |
| Purification        | Affinity purification  |
| Dilution Range      | WB:1:500-1:1000<br>IHC-P:1:50-1:200<br>ELISA:Recommended starting concentration is 1 µg/mL. Please optimize the concentration based on your specific assay requirements. |
| Formulation         | PBS with 0.05% Proclin300, 0.05% BSA, 50% Glycerol, pH 7.3.  |
| Isotype             | IgG  |
| Molecular Weight    | Protein Mw: 172kDa<br>Observed Mw: 170-220kDa  |
| Storage Instruction | Store at -20°C for up to 1 year from the date of receipt, and avoid repeat freeze-thaw cycles.   |

### TARGET INFORMATION

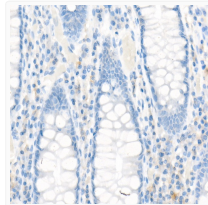
|                    |  |
|--------------------|--|
| Gene ID            | <a href="#">4363</a>   |
| Gene Symbol        | <a href="#">ABCC1</a>  |
| UniProt ID         | <a href="#">MRP1_HUMAN</a>   |
| Immunogen Region   | 210-304  |
| Immunogen Sequence | ESSASFLSRITFWWITGLIV RGYRQPLEGSDLWLSLNKEDT SEQVVPVLVKNWKKECAKTR<br>KQPVKVVVYSSKDPAPKKESS KVDANEEVEALIVKS                 |
| Specificity        | Recombinant fusion protein containing a sequence corresponding to amino acids 210-304 of human MRP1/ABCC1 (NP_004987.2). |

### ADDITIONAL INFORMATION

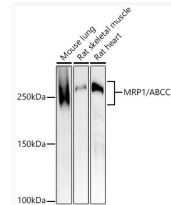
Note STRICTLY FOR FURTHER SCIENTIFIC RESEARCH USE ONLY (RUO). MUST NOT TO BE USED IN DIAGNOSTIC OR THERAPEUTIC APPLICATIONS.



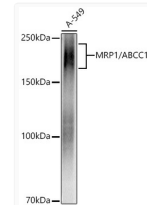
Immunohistochemistry analysis of MRP1/ABCC1 in paraffin-embedded human colon carcinoma using MRP1/ABCC1 Rabbit monoclonal antibody (STJ11103479) at dilution of 1:100 (40x lens). Perform high pressure antigen retrieval with 10 mM citrate buffer pH 6.0 before commencing with immunohistochemistry staining protocol.



Immunohistochemistry analysis of MRP1/ABCC1 in paraffin-embedded Human colon using MRP1/ABCC1 Rabbit monoclonal antibody (STJ11103479) at dilution of 1:100 (40x lens). Perform high pressure antigen retrieval with 10 mM citrate buffer pH 6.0 before commencing with immunohistochemistry staining protocol.



Western blot analysis of various lysates using MRP1/ABCC1 Rabbit monoclonal antibody (STJ11103479) at 1:1000 dilution. Secondary antibody: HRP Goat Anti-Rabbit IgG (H+L) (STJS000856) at 1:10000 dilution. Lysates/proteins: 25 µg per lane. Blocking buffer: 3% nonfat dry milk in TBST. Detection: ECL Basic Kit. Exposure time: 180s.



Western blot analysis of lysates from A-549 cells using MRP1/ABCC1 Rabbit monoclonal antibody (STJ11103479) at 1:1000 dilution. Secondary antibody: HRP Goat Anti-Rabbit IgG (H+L) (STJS000856) at 1:10000 dilution. Lysates/proteins: 25 µg per lane. Blocking buffer: 3% nonfat dry milk in TBST. Detection: ECL Basic Kit. Exposure time: 1S.