

Anti-Apolipoprotein C3 antibody (1-99) [S7MR] (STJ11103477)

GENERAL INFORMATION

Product Type	Primary antibodies
Applications	WB/IHC-P/IF/ICC/ELISA
Host / Source	Rabbit
Reactivity	Human/Mouse

PRODUCT PROPERTIES

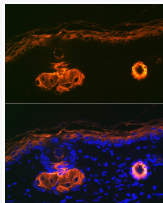
Clonality	Monoclonal
Concentration	Lot specific
Conjugation	Unconjugated
Purification	Affinity purification
Dilution Range	WB:1:500-1:1000 IHC-P:1:50-1:200 IF/CC:1:50-1:200 ELISA:Recommended starting concentration is 1 μ g/mL. Please optimize the concentration based on your specific assay requirements.
Formulation	PBS with 0.02% Sodium Azide, 0.05% BSA, 50% Glycerol, pH 7.3.
Isotype	IgG
Molecular Weight	Protein Mw: 11kDa Observed Mw: 11kDa
Storage Instruction	Store at -20°C for up to 1 year from the date of receipt, and avoid repeat freeze-thaw cycles.

TARGET INFORMATION

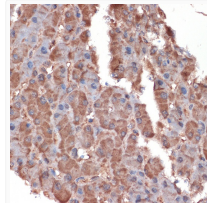
Gene ID	345
Gene Symbol	APOC3
UniProt ID	APOC3_HUMAN
Immunogen Region	1-99
Immunogen Sequence	MQPRVLLVVALLALLASARA SEAEDASLLSFMQGYMKHAT KTKADALSSVQESQVAQQAR GWVTDGFSSLKDYWSTVKDK FSEFWLDLPEVRPTSAAAA
Specificity	A synthetic peptide corresponding to a sequence within amino acids 1-99 of human Apolipoprotein C3 (P02656).

ADDITIONAL INFORMATION

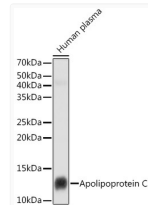
Note **STRICTLY FOR FURTHER SCIENTIFIC RESEARCH USE ONLY (RUO). MUST NOT TO BE USED IN DIAGNOSTIC OR THERAPEUTIC APPLICATIONS.**



Immunofluorescence analysis of paraffin-embedded mouse liver using Apolipoprotein C3 Rabbit monoclonal antibody (STJ11103477) at dilution of 1:100 (40x lens). Secondary antibody: Cy3 Goat Anti-Rabbit IgG (H+L) at 1:500 dilution. Blue: DAPI for nuclear staining.



Immunohistochemistry analysis of Apolipoprotein C3 in paraffin-embedded human liver using Apolipoprotein C3 Rabbit monoclonal antibody (STJ11103477) at dilution of 1:100 (40x lens). Perform microwave antigen retrieval with 10 mM Tris/EDTA buffer pH 9.0 before commencing with immunohistochemistry staining protocol.



Western blot analysis of lysates from Human plasma, using Apolipoprotein C3 Rabbit monoclonal antibody (STJ11103477) at 1:1000 dilution. Secondary antibody: HRP Goat Anti-Rabbit IgG (H+L) (STJS000856) at 1:10000 dilution. Lysates/proteins: 25 μ g per lane. Blocking buffer: 3% nonfat dry milk in TBST. Detection: ECL Basic Kit. Exposure time: 5s.