

## Anti-SLFN11 antibody (132-328) [S7MR] (STJ11103467)

### GENERAL INFORMATION

Product Type	Primary antibodies
Applications	WB/ELISA
Host / Source	Rabbit
Reactivity	Human

### PRODUCT PROPERTIES

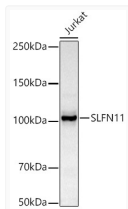
Clonality	Monoclonal
Concentration	Lot specific
Conjugation	Unconjugated
Purification	Affinity purification
Dilution Range	WB:1:500-1:1000 ELISA:Recommended starting concentration is 1 µg/mL. Please optimize the concentration based on your specific assay requirements.
Formulation	PBS with 0.05% Proclin300, 0.05% BSA, 50% Glycerol, pH 7.3.
Isotype	IgG
Molecular Weight	Protein Mw: 103kDa Observed Mw: 101kDa
Storage Instruction	Store at -20°C for up to 1 year from the date of receipt, and avoid repeat freeze-thaw cycles.

### TARGET INFORMATION

Gene ID	<a href="#">91607</a>
Gene Symbol	<a href="#">SLFN11</a>
UniProt ID	<a href="#">SLN11_HUMAN</a>
Immunogen Region	132-328
Immunogen Sequence	LYRRSETSVRSMDSREAFQCF LKTKRKP KILEEGPFHKIHK GVYQELPNSDPADPNSDPAD LIFQKDYLEYGEILPFPEQSQ LVEFKQFSTKHFQEYVKRTI PEYVPAFANTGGGYLFIGVD DKSREVLGC AKENVDPDSL R KIEQAIYKLP CVHFCQPQR PITFTLKIVNV LKRGELYGY ACMIRVNPFC CAVFSEA
Specificity	Recombinant fusion protein containing a sequence corresponding to amino acids 132-328 of human SLFN11 (NP_689483.3).

### ADDITIONAL INFORMATION

Note **STRICTLY FOR FURTHER SCIENTIFIC RESEARCH USE ONLY (RUO). MUST NOT TO BE USED IN DIAGNOSTIC OR THERAPEUTIC APPLICATIONS.**



Western blot analysis of Jurkat, using SLFN11 antibody (STJ11103467) at 1:1000 dilution. Secondary antibody: HRP Goat Anti-Rabbit IgG (H+L) (STJS000856) at 1:10000 dilution. Lysates/proteins: 25 µg per lane. Blocking buffer: 3% nonfat dry milk in TBST. Detection: ECL Basic Kit. Exposure time: 30s.