

Anti-PQBP1 antibody (1-265 aa) [S7MR] (STJ11103447)

GENERAL INFORMATION

Product Type	Primary antibodies
Applications	WB/ELISA
Host / Source	Rabbit
Reactivity	Mouse/Rat

PRODUCT PROPERTIES

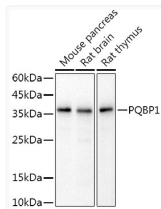
Clonality	Monoclonal
Concentration	Lot specific
Conjugation	Unconjugated
Purification	Affinity purification
Dilution Range	WB:1:500-1:1000 ELISA:Recommended starting concentration is 1 μ g/mL. Please optimize the concentration based on your specific assay requirements.
Formulation	PBS with 0.02% Sodium Azide, 0.05% BSA, 50% Glycerol, pH 7.3.
Isotype	IgG
Molecular Weight	Protein Mw: 30kDa Observed Mw: 38kDa
Storage Instruction	Store at -20°C for up to 1 year from the date of receipt, and avoid repeat freeze-thaw cycles.

TARGET INFORMATION

Gene ID	10084
Gene Symbol	PQBP1
UniProt ID	PQBP1_HUMAN
Immunogen Region	1-265 aa
Immunogen Sequence	MPLPVALQTRLAKRGILKHL EPEPEEEIIAEDYDDDPVDY EATRLEGLPPSWYKVFDPSC GLPYYWNADTDLVSWLSPHD PNSVVTSAKCLRSSNADAE EKLD RSHDKSDRGHDKSDRS HEKLD RGHDKSDRGHDKSDR DRERGYDKVDRERERDRERD RDRGYDKADREEGKERHHR REELAPYPKSKKAVSRKDEE LDPMDPSSYS DAPRGTWSTG LPKRNEAKTGADTTAAGPL
Specificity	Recombinant fusion protein containing a sequence corresponding to amino acids 1-265 of human PQBP1 (NP_001027553.1).

ADDITIONAL INFORMATION

Note **STRICTLY FOR FURTHER SCIENTIFIC RESEARCH USE ONLY (RUO). MUST NOT TO BE USED IN DIAGNOSTIC OR THERAPEUTIC APPLICATIONS.**



Western blot analysis of various lysates, using PQBP1 Rabbit monoclonal antibody (STJ11103447) at 1:1000 dilution. Secondary antibody: HRP Goat Anti-Rabbit IgG (H+L) (STJS000856) at 1:10000 dilution. Lysates/proteins: 25 μ g per lane. Blocking buffer: 3% nonfat dry milk in TBST. Detection: ECL Basic Kit. Exposure time: 3s.