

## Anti-GSDMD antibody (346-484) [S8MR] (STJ11103428)

### GENERAL INFORMATION

Product Type	Primary antibodies
Applications	WB/ELISA
Host / Source	Rabbit
Reactivity	Human

### PRODUCT PROPERTIES

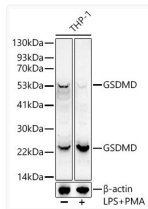
Clonality	Monoclonal
Concentration	Lot specific
Conjugation	Unconjugated
Purification	Affinity purification
Dilution Range	WB:1:1000-1:2000 ELISA:Recommended starting concentration is 1 Mu g/mL. Please optimize the concentration based on your specific assay requirements.
Formulation	PBS with 0.05% Proclin300, 0.05% BSA, 50% Glycerol, pH 7.3.
Isotype	IgG
Molecular Weight	Protein Mw: 53kDa Observed Mw: 53kDa/22kDa/
Storage Instruction	Store at -20°C for up to 1 year from the date of receipt, and avoid repeat freeze-thaw cycles.

### TARGET INFORMATION

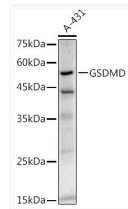
Gene ID	<a href="#">79792</a>
Gene Symbol	<a href="#">GSDMD</a>
UniProt ID	<a href="#">GSDMD_HUMAN</a>
Immunogen Region	346-484
Immunogen Sequence	DGPAGAVLECLVLSGMLVP ELAIPVVYLLGALTMSETQ HKLLAEALESQTLLGPLELV GSLLEQSAPWQERSTMSLPP GLLGNSWGE GAPAWVLLDEC GLELGEDTPHVCWEPQAQGR MCALYASLALLSGLSQEPH
Specificity	Recombinant fusion protein containing a sequence corresponding to amino acids 346-484 of human GSDMD (NP_079012.3).

### ADDITIONAL INFORMATION

Note STRICTLY FOR FURTHER SCIENTIFIC RESEARCH USE ONLY (RUO). MUST NOT TO BE USED IN DIAGNOSTIC OR THERAPEUTIC APPLICATIONS.



Western blot analysis of lysates from THP-1 cells, using GSDMD Rabbit monoclonal antibody (STJ11103428) at 1:1000 dilution. THP-1 cells were treated by PMA/TPA (80 nM) at 37 °C for overnight and LPS (1 Mu g/ml) at 37 °C for 6 hours. Secondary antibody: HRP Goat Anti-Rabbit IgG (H+L) (STJS000856) at 1:10000 dilution. Lysates/proteins: 25 Mu g per lane. Blocking buffer: 3% nonfat dry milk in TBST. Detection: ECL Enhanced Kit. Exposure time: 60s.



Western blot analysis of lysates from A-431 cells, using GSDMD Rabbit monoclonal antibody (STJ11103428) at 1:1000 dilution. Secondary antibody: HRP Goat Anti-Rabbit IgG (H+L) (STJS000856) at 1:10000 dilution. Lysates/proteins: 25 Mu g per lane. Blocking buffer: 3% nonfat dry milk in TBST. Detection: ECL Enhanced Kit. Exposure time: 180s.