

Anti-SCAF4 antibody (170-248) (STJ11103425)

GENERAL INFORMATION

Product Type	Primary antibodies
Applications	IHC-P/ELISA
Host / Source	Rabbit
Reactivity	Human/Mouse/Rat

PRODUCT PROPERTIES

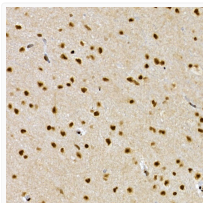
Clonality	Polyclonal
Concentration	Lot specific
Conjugation	Unconjugated
Purification	Affinity purification
Dilution Range	IHC-P:1:50-1:200 ELISA:Recommended starting concentration is 1 µg/mL. Please optimize the concentration based on your specific assay requirements.
Formulation	PBS with 0.05% Proclin300, 50% Glycerol, pH 7.3.
Isotype	IgG
Molecular Weight	Protein Mw: 126kDa Observed Mw:
Storage Instruction	Store at -20°C for up to 1 year from the date of receipt, and avoid repeat freeze-thaw cycles.

TARGET INFORMATION

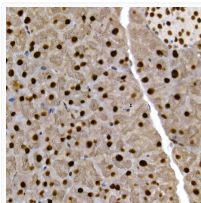
Gene ID	57466
Gene Symbol	SCAF4
UniProt ID	SCAF4_HUMAN
Immunogen Region	170-248
Immunogen Sequence	TPNSVPAVPQLPSSDAFAAV AQLFQTTQGGQLQILQTFQ QPPKQSPALDNAVMAQVQA ITAQLKTTPTQPSEQKAAF
Specificity	Recombinant fusion protein containing a sequence corresponding to amino acids 170-248 of human SCAF4 (NP_065757.1).

ADDITIONAL INFORMATION

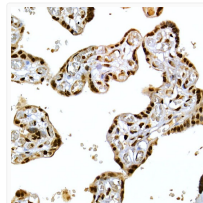
Note **STRICTLY FOR FURTHER SCIENTIFIC RESEARCH USE ONLY (RUO). MUST NOT TO BE USED IN DIAGNOSTIC OR THERAPEUTIC APPLICATIONS.**



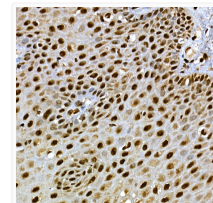
Immunohistochemistry analysis of SCAF4 in paraffin-embedded rat brain using SCAF4 Rabbit polyclonal antibody (STJ11103425) at dilution of 1:50 (40x lens). Perform high pressure antigen retrieval with 10 mM citrate buffer pH 6.0 before commencing with immunohistochemistry staining protocol.



Immunohistochemistry analysis of SCAF4 in paraffin-embedded mouse pancreas using SCAF4 Rabbit polyclonal antibody (STJ11103425) at dilution of 1:50 (40x lens). Perform high pressure antigen retrieval with 10 mM citrate buffer pH 6.0 before commencing with immunohistochemistry staining protocol.



Immunohistochemistry analysis of SCAF4 in paraffin-embedded human placenta using SCAF4 Rabbit polyclonal antibody (STJ11103425) at dilution of 1:50 (40x lens). Perform high pressure antigen retrieval with 10 mM citrate buffer pH 6.0 before commencing with immunohistochemistry staining protocol.



Immunohistochemistry analysis of SCAF4 in paraffin-embedded human esophagus using SCAF4 Rabbit polyclonal antibody (STJ11103425) at dilution of 1:50 (40x lens). Perform high pressure antigen retrieval with 10 mM citrate buffer pH 6.0 before commencing with immunohistochemistry staining protocol.