

Anti-DYNC1LI2 antibody (328-492) (STJ11103393)

GENERAL INFORMATION

Product Type	Primary antibodies
Applications	WB/IHC-P/ELISA
Host / Source	Rabbit
Reactivity	Human/Mouse/Rat

PRODUCT PROPERTIES

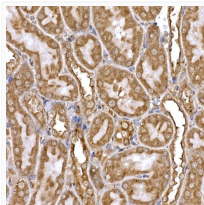
Clonality	Polyclonal
Concentration	Lot specific
Conjugation	Unconjugated
Purification	Affinity purification
Dilution Range	WB:1:500-1:1000 IHC-P:1:50-1:200 ELISA:Recommended starting concentration is 1 Mu g/mL. Please optimize the concentration based on your specific assay requirements.
Formulation	PBS with 0.05% Proclin300, 50% Glycerol, pH 7.3.
Isotype	IgG
Molecular Weight	Protein Mw: 54kDa Observed Mw: 54kDa
Storage Instruction	Store at -20°C for up to 1 year from the date of receipt, and avoid repeat freeze-thaw cycles.

TARGET INFORMATION

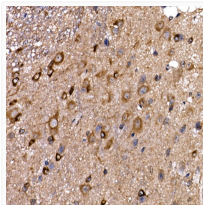
Gene ID	1783
Gene Symbol	DYNC1LI2
UniProt ID	DC1L2_HUMAN
Immunogen Region	328-492
Immunogen Sequence	TTVKPEDAYEDFIVKPPVRK LVHDKELAAEDEVFLMKQQ SLLAKQPATPTRAESPARG PSGSPRTQGRGGPASVPSSS PGTSVKPKDPNKNNAASEG VLASFFNLSLTKTGSPGSP GAGGVQSTAKKSGQKTVLSN VQEELDRMTRKPDMSMTNSS TENEA
Specificity	Recombinant fusion protein containing a sequence corresponding to amino acids 328-492 of human DYNC1LI2 (NP_006132.1).

ADDITIONAL INFORMATION

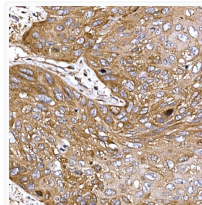
Note **STRICTLY FOR FURTHER SCIENTIFIC RESEARCH USE ONLY (RUO). MUST NOT TO BE USED IN DIAGNOSTIC OR THERAPEUTIC APPLICATIONS.**



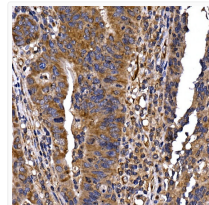
Immunohistochemistry analysis of paraffin-embedded rat kidney using DYNC1LI2 Rabbit polyclonal antibody (STJ11103393) at dilution of 1:20 (40x lens). Perform high pressure antigen retrieval with 10 mM citrate buffer pH 6. 0 before commencing with immunohistochemistry staining protocol.



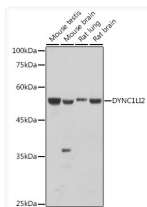
Immunohistochemistry analysis of paraffin-embedded mouse spinal cord using DYNC1LI2 Rabbit polyclonal antibody (STJ11103393) at dilution of 1:20 (40x lens). Perform high pressure antigen retrieval with 10 mM citrate buffer pH 6. 0 before commencing with immunohistochemistry staining protocol.



Immunohistochemistry analysis of paraffin-embedded human esophageal cancer using DYNC1LI2 Rabbit polyclonal antibody (STJ11103393) at dilution of 1:20 (40x lens). Perform high pressure antigen retrieval with 10 mM citrate buffer pH 6. 0 before commencing with immunohistochemistry staining protocol.



Immunohistochemistry analysis of paraffin-embedded human colon carcinoma using DYNC1LI2 Rabbit polyclonal antibody (STJ11103393) at dilution of 1:20 (40x lens). Perform high pressure antigen retrieval with 10 mM citrate buffer pH 6. 0 before commencing with immunohistochemistry staining protocol.



Western blot analysis of extracts of various cell lines, using DYNC1LI2 antibody (STJ11103393) at 1:1000 dilution. Secondary antibody: HRP Goat Anti-Rabbit IgG (H+L) (STJS000856) at 1:10000 dilution. Lysates/proteins: 25 Mu g per lane. Blocking buffer: 3% nonfat dry milk in TBST. Detection: ECL Basic Kit. Exposure time: 30s.