

Anti-MERS-CoV Spike RBD antibody (18-725) (STJ11103388)

GENERAL INFORMATION

Product Type	Primary antibodies
Applications	WB/IF/ICC/ELISA
Host / Source	Rabbit
Reactivity	MERS-CoV

PRODUCT PROPERTIES

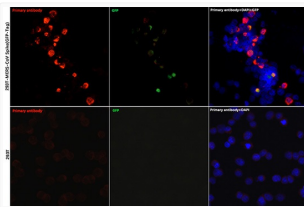
Clonality	Polyclonal
Concentration	Lot specific
Conjugation	Unconjugated
Purification	Affinity purification
Dilution Range	WB:1:500-1:1000 IF/CC:1:50-1:200 ELISA:Recommended starting concentration is 1 Mu g/mL. Please optimize the concentration based on your specific assay requirements.
Formulation	PBS with 0.05% Proclin300, 50% Glycerol, pH 7.3.
Isotype	IgG
Molecular Weight	Protein Mw: 149kDa Observed Mw: 200kDa
Storage Instruction	Store at -20°C for up to 1 year from the date of receipt, and avoid repeat freeze-thaw cycles.

TARGET INFORMATION

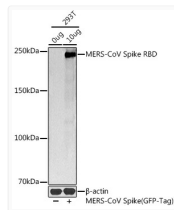
Immunogen Region	18-725
Immunogen Sequence	YVDVGPDSVKSACIEVDIQQ TFFDKTWPRPIDVSKADGII YPQGRYTSNITYQGLFPY QGDHGDMMYVYSAGHATGTP QKLFVANYSQDVVKQFANGFV VRIGAAANSTGTVIISPSTS ATIRKIYPAFMLGSSVGNFS DGKMGRFFNHTLVLLPDGCG TLLRAFYCILEPRSGNHCPA GNSYTSFATYHTPATDCSDG NYNRNASLNSFKEYFNLRNC TFMYYTNI TEDEILEWFGI
Specificity	Recombinant fusion protein containing a sequence corresponding to amino acids 18-725 of coronavirus Spike RBD (YP_009047204.1).

ADDITIONAL INFORMATION

Note STRICTLY FOR FURTHER SCIENTIFIC RESEARCH USE ONLY (RUO). MUST NOT TO BE USED IN DIAGNOSTIC OR THERAPEUTIC APPLICATIONS.



Immunofluorescence analysis of 293T cells transfected with MERS-CoV Spike (GFP-Tag) protein and untreated 293T cells use MERS-CoV Spike RBD Rabbit polyclonal antibody (STJ11103388) at dilution of 1:200 (40x lens). Blue: DAPI for nuclear staining.



Western blot analysis of extracts of various cell lines, using MERS-CoV Spike RBD antibody (STJ11103388) at 1:1000 dilution. Secondary antibody: HRP Goat Anti-Rabbit IgG (H+L) (STJS000856) at 1:10000 dilution. Lysates/proteins: 25 Mu g per lane. Blocking buffer: 3% nonfat dry milk in TBST. Detection: ECL Basic Kit. Exposure time: 1s.