

Anti-PRR12 antibody (1687-2036) (STJ11103382)

GENERAL INFORMATION

Product Type	Primary antibodies
Applications	WB/ELISA
Host / Source	Rabbit
Reactivity	Human/Mouse/Rat

PRODUCT PROPERTIES

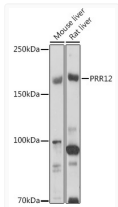
Clonality	Polyclonal
Concentration	Lot specific
Conjugation	Unconjugated
Purification	Affinity purification
Dilution Range	WB:1:500-1:1000 ELISA:Recommended starting concentration is 1 µg/mL. Please optimize the concentration based on your specific assay requirements.
Formulation	PBS with 0.05% Proclin300, 50% Glycerol, pH 7.3.
Isotype	IgG
Molecular Weight	Protein Mw: 211kDa Observed Mw: 200kDa
Storage Instruction	Store at -20°C for up to 1 year from the date of receipt, and avoid repeat freeze-thaw cycles.

TARGET INFORMATION

Gene ID	57479
Gene Symbol	PRR12
UniProt ID	PRR12_HUMAN
Immunogen Region	1687-2036
Immunogen Sequence	GGSSAPPPKAPAPPPKPETP EKTSEKPPPEQTPETAMPEP PAPEKPSLLRPVEKEKEKEK VTRGERPLRGERATSGRQTR PERSLATGQPATSRLPKARP TKVKAEPKPPKRRKKWLKEAG GNATAGGGPPGSSSDSESSP GAPSEDERAVPGRLKTRAM REMYRSYVEMLVSTALDPDM IQALETDHDELYLPPMRKID GLLNEHKKKVLKRLSLSPAL QDALHTFPQLQVEQSGEGS
Specificity	Recombinant fusion protein containing a sequence corresponding to amino acids 1687-2036 of human PRR12 (NP_065770.1).

ADDITIONAL INFORMATION

Note **STRICTLY FOR FURTHER SCIENTIFIC RESEARCH USE ONLY (RUO). MUST NOT TO BE USED IN DIAGNOSTIC OR THERAPEUTIC APPLICATIONS.**



Western blot analysis of extracts of various cell lines, using PRR12 antibody (STJ11103382) at 1:1000 dilution. Secondary antibody: HRP Goat Anti-Rabbit IgG (H+L) (STJS000856) at 1:10000 dilution. Lysates/proteins: 25 µg per lane. Blocking buffer: 3% nonfat dry milk in TBST. Detection: ECL Basic Kit. Exposure time: 180s.