

## Anti-SARM1 antibody (625-724) (STJ11103379)

### GENERAL INFORMATION

Product Type	Primary antibodies
Applications	WB/IP/ELISA
Host / Source	Rabbit
Reactivity	Human

### PRODUCT PROPERTIES

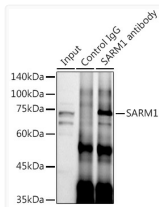
Clonality	Polyclonal
Concentration	Lot specific
Conjugation	Unconjugated
Purification	Affinity purification
Dilution Range	WB:1:500-1:1000 IP:0.5 Mu g-4 Mu g antibody for 200 Mu g-400 Mu g extracts of whole cells ELISA:Recommended starting concentration is 1 Mu g/mL. Please optimize the concentration based on your specific assay requirements.
Formulation	PBS with 0.05% Proclin300, 50% Glycerol, pH 7.3.
Isotype	IgG
Molecular Weight	Protein Mw: 79kDa Observed Mw: 73kDa
Storage Instruction	Store at -20°C for up to 1 year from the date of receipt, and avoid repeat freeze-thaw cycles.

### TARGET INFORMATION

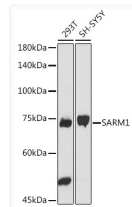
Gene ID	<a href="#">23098</a>
Gene Symbol	<a href="#">SARM1</a>
UniProt ID	<a href="#">SARM1_HUMAN</a>
Immunogen Region	625-724
Immunogen Sequence	ALDKCMQDHDCKDWVHKEIV TALSCGKNIVPIIDGFEWPE PQVLPEDMQAVLTFNGIKWS HEYQEATIEKIIRFLQGRSS RDSSAGSDTSLEGAAPMGPT
Specificity	A synthetic peptide corresponding to a sequence within amino acids 625-724 of human SARM1 (NP_055892.2).

### ADDITIONAL INFORMATION

Note **STRICTLY FOR FURTHER SCIENTIFIC RESEARCH USE ONLY (RUO). MUST NOT TO BE USED IN DIAGNOSTIC OR THERAPEUTIC APPLICATIONS.**



Immunoprecipitation analysis of 300 Mu g extracts of SH-SY5Y cells using 3 Mu g SARM1 antibody (STJ11103379). Western blot was performed from the immunoprecipitate using SARM1 antibody (STJ11103379) at a dilution of 1:1000.



Western blot analysis of various lysates using SARM1 Rabbit polyclonal antibody (STJ11103379) at 1:1000 dilution. Secondary antibody: HRP Goat Anti-Rabbit IgG (H+L) (STJS000856) at 1:10000 dilution. Lysates/proteins: 25 Mu g per lane. Blocking buffer: 3% nonfat dry milk in TBST. Detection: ECL Basic Kit. Exposure time: 90s.