

Anti-SLFN11 antibody (132-328) (STJ11103342)

GENERAL INFORMATION

Product Type	Primary antibodies
Applications	WB/ELISA
Host / Source	Rabbit
Reactivity	Human

PRODUCT PROPERTIES

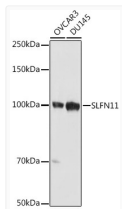
Clonality	Polyclonal
Concentration	Lot specific
Conjugation	Unconjugated
Purification	Affinity purification
Dilution Range	WB:1:500-1:1000 ELISA:Recommended starting concentration is 1 µg/mL. Please optimize the concentration based on your specific assay requirements.
Formulation	PBS with 0.05% Proclin300, 50% Glycerol, pH 7.3.
Isotype	IgG
Molecular Weight	Protein Mw: 103kDa Observed Mw: 100kDa
Storage Instruction	Store at -20°C for up to 1 year from the date of receipt, and avoid repeat freeze-thaw cycles.

TARGET INFORMATION

Gene ID	91607
Gene Symbol	SLFN11
UniProt ID	SLN11_HUMAN
Immunogen Region	132-328
Immunogen Sequence	LYRRSETSVRSMDSREAFQCF LKTKRKP KILEEGPFHKKIHK G VYQELPNSDPADPNSDPAD LIFQKDYLEYGEILPFPEQSQ LVEFKQFSTKHFQEYVKRTI PEYVPAFANTGGGYLFIGVD DKSREVLGC AKENVDPSLR RKIEQAIYKLP CVHFCQPQR PITFTLKIVNVLKRGE LYG Y ACMIRVNPFC CAVFSEA
Specificity	Recombinant fusion protein containing a sequence corresponding to amino acids 132-328 of human SLFN11 (NP_689483.3).

ADDITIONAL INFORMATION

Note STRICTLY FOR FURTHER SCIENTIFIC RESEARCH USE ONLY (RUO). MUST NOT TO BE USED IN DIAGNOSTIC OR THERAPEUTIC APPLICATIONS.



Western blot analysis of extracts of various cell lines, using SLFN11 antibody (STJ11103342) at 1:1000 dilution. Secondary antibody: HRP Goat Anti-Rabbit IgG (H+L) (STJS000856) at 1:10000 dilution. Lysates/proteins: 25 µg per lane. Blocking buffer: 3% nonfat dry milk in TBST. Detection: ECL Basic Kit. Exposure time: 10s.