

## Anti-NEURL1B antibody (270-440) (STJ11103331)

### GENERAL INFORMATION

Product Type	Primary antibodies
Applications	WB/IHC-P/ELISA
Host / Source	Rabbit
Reactivity	Human/Mouse/Rat

### PRODUCT PROPERTIES

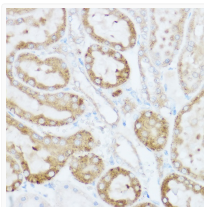
Clonality	Polyclonal
Concentration	Lot specific
Conjugation	Unconjugated
Purification	Affinity purification
Dilution Range	WB:1:500-1:1000 IHC-P:1:50-1:200 ELISA:Recommended starting concentration is 1 Mu g/mL. Please optimize the concentration based on your specific assay requirements.
Formulation	PBS with 0.01% Thimerosal, 50% Glycerol, pH 7.3.
Isotype	IgG
Molecular Weight	Protein Mw: 59kDa Observed Mw: 59kDa
Storage Instruction	Store at -20°C for up to 1 year from the date of receipt, and avoid repeat freeze-thaw cycles.

### TARGET INFORMATION

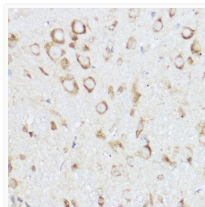
Gene ID	<a href="#">54492</a>
Gene Symbol	<a href="#">NEURL1B</a>
UniProt ID	<a href="#">NEU1B_HUMAN</a>
Immunogen Region	270-440
Immunogen Sequence	ASSPALLEADLRFHATRGPD VLSADRKVCACAPRPDGGRT LVFSEPLRPGESLFVEVGR PGLAAPGALAFGITSCDPGV LRPNELPADPDALLDRKEYW VVARAGPVPSGGDALSFTLR PGGDVLLGINGRPRGRLLCV DTTQALWAFFAVRGGVAGQL RLLGTLQSSPA
Specificity	Recombinant fusion protein containing a sequence corresponding to amino acids 270-440 of human NEURL1B (NP_001136123.1).

### ADDITIONAL INFORMATION

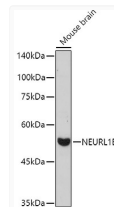
Note **STRICTLY FOR FURTHER SCIENTIFIC RESEARCH USE ONLY (RUO). MUST NOT TO BE USED IN DIAGNOSTIC OR THERAPEUTIC APPLICATIONS.**



Immunohistochemistry analysis of NEURL1B in paraffin-embedded rat kidney using NEURL1B Rabbit polyclonal antibody (STJ11103331) at dilution of 1:100 (40x lens). Perform high pressure antigen retrieval with 10 mM citrate buffer pH 6.0 before commencing with immunohistochemistry staining protocol.



Immunohistochemistry analysis of NEURL1B in paraffin-embedded mouse spinal cord using NEURL1B Rabbit polyclonal antibody (STJ11103331) at dilution of 1:100 (40x lens). Perform high pressure antigen retrieval with 10 mM citrate buffer pH 6.0 before commencing with immunohistochemistry staining protocol.



Western blot analysis of lysates from Mouse brain, using NEURL1B Rabbit polyclonal antibody (STJ11103331) at 1:1000 dilution. Secondary antibody: HRP Goat Anti-Rabbit IgG (H+L) (STJS000856) at 1:10000 dilution. Lysates/proteins: 25 Mu g per lane. Blocking buffer: 3% nonfat dry milk in TBST. Detection: ECL Basic Kit. Exposure time: 180s.