

Anti-AUTS2 antibody (550-770) (STJ11103329)

GENERAL INFORMATION

| | |
|---------------|--------------------|
| Product Type | Primary antibodies |
| Applications | WB/IF/ICC/ELISA |
| Host / Source | Rabbit |
| Reactivity | Human/Mouse/Rat |

PRODUCT PROPERTIES

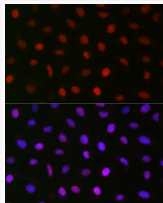
| | |
|---------------------|---|
| Clonality | Polyclonal |
| Concentration | Lot specific |
| Conjugation | Unconjugated |
| Purification | Affinity purification |
| Dilution Range | WB:1:500-1:1000 IF/ICC:1:50-1:200 ELISA:Recommended starting concentration is 1 Mu g/mL. Please optimize the concentration based on your specific assay requirements. |
| Formulation | PBS with 0.01% Thimerosal, 50% Glycerol, pH 7.3. |
| Isotype | IgG |
| Molecular Weight | Protein Mw: 139kDa Observed Mw: 70kDa/139kDa |
| Storage Instruction | Store at -20°C for up to 1 year from the date of receipt, and avoid repeat freeze-thaw cycles. |

TARGET INFORMATION

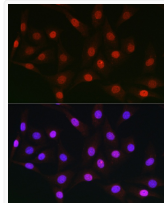
| | |
|--------------------|--|
| Gene ID | 26053 |
| Gene Symbol | AUTS2 |
| UniProt ID | AUTS2_HUMAN |
| Immunogen Region | 550-770 |
| Immunogen Sequence | IPPTAIMPTPAPPMFDKYPT KVDPFYRHSLSFHSYPPAVSG IPPMIPPTGPFGLSLOGAFQP KLTDPFRPMLRKPGKWCAMH VHIAWQIYHHQQKVKKQMQS DPHKLD FGLKPEFLSRPPGP SLFGAIHHPHDLARPSTLFS AAGAAHPTGTPFGPPPHHSN FLNPAAHLEFPNRPSTFTGL AAVGGNAFGGLGNPSVTPNS MFGHKDGPVQNFNSNPHEPW N |
| Specificity | Recombinant fusion protein containing a sequence corresponding to amino acids 550-770 of human AUTS2 (NP_001120703). |

ADDITIONAL INFORMATION

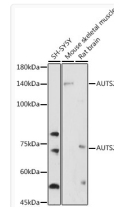
Note **STRICTLY FOR FURTHER SCIENTIFIC RESEARCH USE ONLY (RUO). MUST NOT TO BE USED IN DIAGNOSTIC OR THERAPEUTIC APPLICATIONS.**



Immunofluorescence analysis of U2OS cells using AUTS2 Rabbit polyclonal antibody (STJ11103329) at dilution of 1:50 (40x lens). Secondary antibody: Cy3 Goat Anti-Rabbit IgG (H+L) at 1:500 dilution. Blue: DAPI for nuclear staining.



Immunofluorescence analysis of NIH/3T3 cells using AUTS2 Rabbit polyclonal antibody (STJ11103329) at dilution of 1:50 (40x lens). Secondary antibody: Cy3 Goat Anti-Rabbit IgG (H+L) at 1:500 dilution. Blue: DAPI for nuclear staining.



Western blot analysis of various lysates using AUTS2 Rabbit polyclonal antibody (STJ11103329) at 1:1000 dilution. Secondary antibody: HRP Goat Anti-Rabbit IgG (H+L) (STJS000856) at 1:10000 dilution. Lysates/proteins: 25 Mu g per lane. Blocking buffer: 3% nonfat dry milk in TBST. Detection: ECL Enhanced Kit. Exposure time: 300s.