

Anti-FAF2 antibody (176-393) (STJ11103328)

GENERAL INFORMATION

Product Type	Primary antibodies
Applications	WB/IF/ICC/ELISA
Host / Source	Rabbit
Reactivity	Human/Mouse/Rat

PRODUCT PROPERTIES

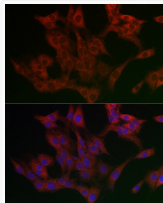
Clonality	Polyclonal
Concentration	Lot specific
Conjugation	Unconjugated
Purification	Affinity purification
Dilution Range	WB:1:500-1:1000 IF/CC:1:50-1:200 ELISA:Recommended starting concentration is 1 Mu g/mL. Please optimize the concentration based on your specific assay requirements.
Formulation	PBS with 0.05% Proclin300, 50% Glycerol, pH 7.3.
Isotype	IgG
Molecular Weight	Protein Mw: 53kDa Observed Mw: 53kDa
Storage Instruction	Store at -20°C for up to 1 year from the date of receipt, and avoid repeat freeze-thaw cycles.

TARGET INFORMATION

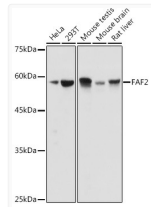
Gene ID	23197
Gene Symbol	FAF2
UniProt ID	FAF2_HUMAN
Immunogen Region	176-393
Immunogen Sequence	YLGDDHQDSDFEFCRNTLCA PEVISLINTRMLFWACSTNK PEGYRVSQALRENTYPFLAM IMLKDRRMTVVGRLGLELIQP DDLINQLTFIMDANQTYLVS ERLEREERNQTQVLRQQQDE AYLASLRADQEKERKKREER ERKRRKEEEVQQQKLAEEERR RQNLQEEKERKLECLPPEPS PDDPESVKIIFKLPNDSRVE RRFHFSQSLTVIHDFLFS
Specificity	Recombinant fusion protein containing a sequence corresponding to amino acids 176-393 of human FAF2 (NP_055428.1).

ADDITIONAL INFORMATION

Note **STRICTLY FOR FURTHER SCIENTIFIC RESEARCH USE ONLY (RUO). MUST NOT TO BE USED IN DIAGNOSTIC OR THERAPEUTIC APPLICATIONS.**



Immunofluorescence analysis of PC-12 cells using FAF2 Rabbit polyclonal antibody (STJ11103328) at dilution of 1:200 (40x lens). Blue: DAPI for nuclear staining.



Western blot analysis of extracts of various cell lines, using FAF2 antibody (STJ11103328) at 1:1000 dilution. Secondary antibody: HRP Goat Anti-Rabbit IgG (H+L) (STJS000856) at 1:10000 dilution. Lysates/proteins: 25 Mu g per lane. Blocking buffer: 3% nonfat dry milk in TBST. Detection: ECL Basic Kit. Exposure time: 1s.