

Anti-IL18 antibody (36-192) (STJ11103326)

GENERAL INFORMATION

Product Type	Primary antibodies
Applications	WB/IHC-P/ELISA
Host / Source	Rabbit
Reactivity	Human/Mouse/Rat

PRODUCT PROPERTIES

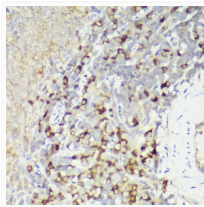
Clonality	Polyclonal
Concentration	Lot specific
Conjugation	Unconjugated
Purification	Affinity purification
Dilution Range	WB:1:500-1:1000 IHC-P:1:50-1:200 ELISA:Recommended starting concentration is 1 Mu g/mL. Please optimize the concentration based on your specific assay requirements.
Formulation	PBS with 0.05% Proclin300, 50% Glycerol, pH 7.3.
Isotype	IgG
Molecular Weight	Protein Mw: 22kDa Observed Mw: 22kDa/18kDa
Storage Instruction	Store at -20°C for up to 1 year from the date of receipt, and avoid repeat freeze-thaw cycles.

TARGET INFORMATION

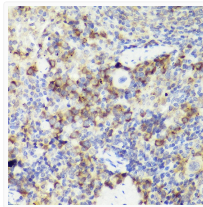
Gene ID	16173
Gene Symbol	IL18
UniProt ID	IL18_MOUSE
Immunogen Region	36-192
Immunogen Sequence	NFGRLHCTTAVIRNINDQVL FVDKRQPVFEDMTDIDQSAS EPQTRLIIMYKDSEVRGLA VTLVSKDSKMSLTSCKNKII SFEEMDPPENIDDIQSDLI FQKRVPGHNKMEFESSLYEG HFLACQKEDDAFKLILKKKD ENGDKSMVFTLTNLHQ S
Specificity	Recombinant fusion protein containing a sequence corresponding to amino acids 36-192 of mouse IL18 (NP_032386.1).

ADDITIONAL INFORMATION

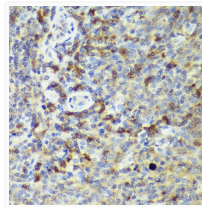
Note **STRICTLY FOR FURTHER SCIENTIFIC RESEARCH USE ONLY (RUO). MUST NOT TO BE USED IN DIAGNOSTIC OR THERAPEUTIC APPLICATIONS.**



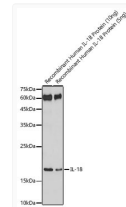
Immunohistochemistry analysis of IL18 in paraffin-embedded rat spleen using IL18 Rabbit polyclonal antibody (STJ11103326) at dilution of 1:50 (40x lens). Perform high pressure antigen retrieval with 10 mM citrate buffer pH 6. 0 before commencing with immunohistochemistry staining protocol.



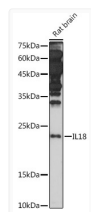
Immunohistochemistry analysis of IL18 in paraffin-embedded mouse spleen using IL18 Rabbit polyclonal antibody (STJ11103326) at dilution of 1:50 (40x lens). Perform high pressure antigen retrieval with 10 mM citrate buffer pH 6. 0 before commencing with immunohistochemistry staining protocol.



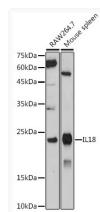
Immunohistochemistry analysis of IL18 in paraffin-embedded human tonsil using IL18 Rabbit polyclonal antibody (STJ11103326) at dilution of 1:50 (40x lens). Perform high pressure antigen retrieval with 10 mM citrate buffer pH 6. 0 before commencing with immunohistochemistry staining protocol.



Western blot analysis of recombinant Human IL-18 Protein using IL18 Rabbit polyclonal antibody (STJ11103326) at 1:1000 dilution. Secondary antibody: HRP Goat Anti-Rabbit IgG (H+L) (STJS000856) at 1:10000 dilution. Lysates/proteins: 10ng/5ng per lane. Blocking buffer: 3% nonfat dry milk in TBST. Detection: ECL Basic Kit. Exposure time: 180s.



Western blot analysis of lysates from Rat brain, using IL18 Rabbit polyclonal antibody (STJ11103326) at 1:1000 dilution. Secondary antibody: HRP Goat Anti-Rabbit IgG (H+L) (STJS000856) at 1:10000 dilution. Lysates/proteins: 25 Mu g per lane. Blocking buffer: 3% nonfat dry milk in TBST. Detection: ECL Basic Kit. Exposure time: 180s.



Western blot analysis of various lysates using IL18 Rabbit polyclonal antibody (STJ11103326) at 1:1000 dilution. Secondary antibody: HRP Goat Anti-Rabbit IgG (H+L) (STJS000856) at 1:10000 dilution. Lysates/proteins: 25 Mu g per lane. Blocking buffer: 3% nonfat dry milk in TBST. Detection: ECL Basic Kit. Exposure time: 30s.