

Anti-KLF12 antibody (220-310) (STJ11103322)

GENERAL INFORMATION

Product Type	Primary antibodies
Applications	WB/IHC-P/ELISA
Host / Source	Rabbit
Reactivity	Mouse/Rat

PRODUCT PROPERTIES

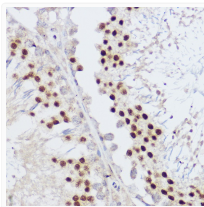
Clonality	Polyclonal
Concentration	Lot specific
Conjugation	Unconjugated
Purification	Affinity purification
Dilution Range	WB:1:500-1:1000 IHC-P:1:50-1:200 ELISA:Recommended starting concentration is 1 Mu g/mL. Please optimize the concentration based on your specific assay requirements.
Formulation	PBS with 0.09% Sodium Azide, 50% Glycerol, pH7.3.
Isotype	IgG
Molecular Weight	Protein Mw: 44kDa Observed Mw: 65kDa
Storage Instruction	Store at -20°C for up to 1 year from the date of receipt, and avoid repeat freeze-thaw cycles.

TARGET INFORMATION

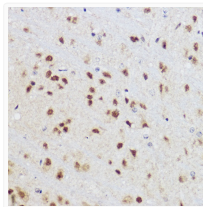
Gene ID	11278
Gene Symbol	KLF12
UniProt ID	KLF12_HUMAN
Immunogen Region	220-310
Immunogen Sequence	GHGKAQMDPRGLSPRQSKSD SDDDDLPNVTLDSVNETGST ALSIARAVQEVHPSVSRVR GNRMNMQKFPCSISPFSES TRRQRRESPE
Specificity	Recombinant fusion protein containing a sequence corresponding to amino acids 220-310 of human KLF12 (NP_009180.3).

ADDITIONAL INFORMATION

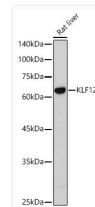
Note STRICTLY FOR FURTHER SCIENTIFIC RESEARCH USE ONLY (RUO). MUST NOT TO BE USED IN DIAGNOSTIC OR THERAPEUTIC APPLICATIONS.



Immunohistochemistry analysis of KLF12 in paraffin-embedded rat testis using KLF12 Rabbit polyclonal antibody (STJ11103322) at dilution of 1:100 (40x lens). Perform high pressure antigen retrieval with 10 mM citrate buffer pH 6.0 before commencing with immunohistochemistry staining protocol.



Immunohistochemistry analysis of KLF12 in paraffin-embedded mouse brain using KLF12 Rabbit polyclonal antibody (STJ11103322) at dilution of 1:100 (40x lens). Perform high pressure antigen retrieval with 10 mM citrate buffer pH 6.0 before commencing with immunohistochemistry staining protocol.



Western blot analysis of lysates from Rat liver using KLF12 Rabbit polyclonal antibody (STJ11103322) at 1:1000 dilution incubated overnight at 4°C. Secondary antibody: HRP-conjugated Goat anti-Rabbit IgG (H+L) (STJS000856) at 1:10000 dilution. Lysates/proteins: 25 Mu g per lane. Blocking buffer: 3% nonfat dry milk in TBST. Detection: ECL Basic Kit. Exposure time: 90s.