

Anti-SCRN1 antibody (195-414) (STJ11103320)

GENERAL INFORMATION

Product Type	Primary antibodies
Applications	WB/IF/ICC/ELISA
Host / Source	Rabbit
Reactivity	Human/Mouse/Rat

PRODUCT PROPERTIES

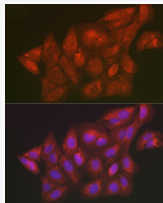
Clonality	Polyclonal
Concentration	Lot specific
Conjugation	Unconjugated
Purification	Affinity purification
Dilution Range	WB:1:500-1:1000 IF/ICC:1:50-1:200 ELISA:Recommended starting concentration is 1 Mu g/mL. Please optimize the concentration based on your specific assay requirements.
Formulation	PBS with 0.05% Proclin300, 50% Glycerol, pH 7.3.
Isotype	IgG
Molecular Weight	Protein Mw: 46kDa Observed Mw: 50kDa
Storage Instruction	Store at -20°C for up to 1 year from the date of receipt, and avoid repeat freeze-thaw cycles.

TARGET INFORMATION

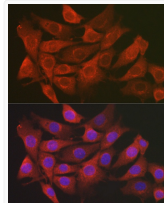
Gene ID	9805
Gene Symbol	SCRN1
UniProt ID	SCRN1_HUMAN
Immunogen Region	195-414
Immunogen Sequence	TKMDAEHPELRSYAQSQGWV TGEGEFNFSEVFPVEDHLD CGAGKDSLEKQEEISITVQTM MNTLRDKASGVCIDSEFFLT TASGVSVLPQNRSSPCHYF TGTPDPSRSIFKPFIFVDDV KLVPKTQSPCFGDDDDPAKKE PRFQEKPDRRHELYKAHEWA RAIIESDQEQGRKLRSTMLE LEKQGLEAMEEILTSSSEPLD PAEVGDLFYDCVDTEIKFFK
Specificity	Recombinant fusion protein containing a sequence corresponding to amino acids 195-414 of human SCRN1 (NP_055581.3).

ADDITIONAL INFORMATION

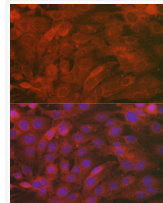
Note **STRICTLY FOR FURTHER SCIENTIFIC RESEARCH USE ONLY (RUO). MUST NOT TO BE USED IN DIAGNOSTIC OR THERAPEUTIC APPLICATIONS.**



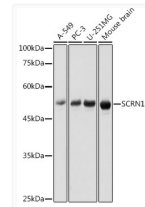
Immunofluorescence analysis of U2OS cells using SCRN1 Rabbit polyclonal antibody (STJ11103320) at dilution of 1:100 (40x lens). Blue: DAPI for nuclear staining.



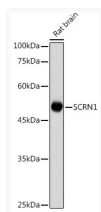
Immunofluorescence analysis of NIH/3T3 cells using SCRN1 Rabbit polyclonal antibody (STJ11103320) at dilution of 1:100 (40x lens). Blue: DAPI for nuclear staining.



Immunofluorescence analysis of C6 cells using SCRN1 Rabbit polyclonal antibody (STJ11103320) at dilution of 1:100 (40x lens). Blue: DAPI for nuclear staining.



Western blot analysis of extracts of various cell lines, using SCRN1 antibody (STJ11103320) at 1:1000 dilution. Secondary antibody: HRP Goat Anti-Rabbit IgG (H+L) (STJS000856) at 1:10000 dilution. Lysates/proteins: 25 Mu g per lane. Blocking buffer: 3% nonfat dry milk in TBST. Detection: ECL Basic Kit. Exposure time: 1s.



Western blot analysis of extracts of Rat brain, using SCRN1 antibody (STJ11103320) at 1:1000 dilution. Secondary antibody: HRP Goat Anti-Rabbit IgG (H+L) (STJS000856) at 1:10000 dilution. Lysates/proteins: 25 Mu g per lane. Blocking buffer: 3% nonfat dry milk in TBST. Detection: ECL Basic Kit. Exposure time: 1s.