

## Anti-Rev-Erb Alpha/NR1D1 antibody (280-360) [S0MR] (STJ11103310)

### GENERAL INFORMATION

|               |                    |
|---------------|--------------------|
| Product Type  | Primary antibodies |
| Applications  | WB/ELISA           |
| Host / Source | Rabbit             |
| Reactivity    | Human/Mouse/Rat    |

### PRODUCT PROPERTIES

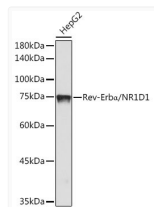
|                     |   |
|---------------------|---|
| Clonality           | Monoclonal  |
| Concentration       | Lot specific  |
| Conjugation         | Unconjugated  |
| Purification        | Affinity purification   |
| Dilution Range      | WB:1:1000-1:2000<br>ELISA:Recommended starting concentration is 1 Mu g/mL. Please optimize the concentration based on your specific assay requirements. |
| Formulation         | PBS with 0.05% Proclin300, 0.05% BSA, 50% Glycerol, pH 7.3.   |
| Isotype             | IgG   |
| Molecular Weight    | Protein Mw: 67kDa<br>Observed Mw: 75kDa   |
| Storage Instruction | Store at -20°C for up to 1 year from the date of receipt, and avoid repeat freeze-thaw cycles.  |

### TARGET INFORMATION

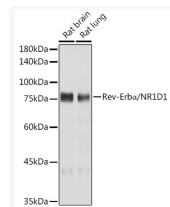
|                    |   |
|--------------------|---|
| Gene ID            | <a href="#">9572</a>  |
| Gene Symbol        | <a href="#">NR1D1</a>   |
| UniProt ID         | <a href="#">NR1D1_HUMAN</a>   |
| Immunogen Region   | 280-360   |
| Immunogen Sequence | SPEPTVEDVISQVARAHREI FTYAHDKLGSSPGNFNANHA SGSPATTTPHRWENQGCPPA<br>PNDNNTLAAQRHNEALNGLR Q  |
| Specificity        | Recombinant fusion protein containing a sequence corresponding to amino acids 280-360 of human Rev-Erb Alpha/NR1D1 (NP_068370.1). |

### ADDITIONAL INFORMATION

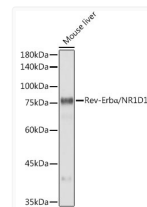
Note **STRICTLY FOR FURTHER SCIENTIFIC RESEARCH USE ONLY (RUO). MUST NOT TO BE USED IN DIAGNOSTIC OR THERAPEUTIC APPLICATIONS.**



Western blot analysis of lysates from HepG2 cells, using Rev-Erb Alpha/NR1D1 Rabbit monoclonal antibody (STJ11103310) at 1:1000 dilution. Secondary antibody: HRP Goat Anti-Rabbit IgG (H+L) (STJS000856) at 1:10000 dilution. Lysates/proteins: 25 Mu g per lane. Blocking buffer: 3% nonfat dry milk in TBST. Detection: ECL Basic Kit. Exposure time: 180s.



Western blot analysis of various lysates using Rev-Erb Alpha/NR1D1 Rabbit monoclonal antibody (STJ11103310) at 1:1000 dilution. Secondary antibody: HRP Goat Anti-Rabbit IgG (H+L) (STJS000856) at 1:10000 dilution. Lysates/proteins: 25 Mu g per lane. Blocking buffer: 3% nonfat dry milk in TBST. Detection: ECL Basic Kit. Exposure time: 30s.



Western blot analysis of lysates from Mouse liver, using Rev-Erb Alpha/NR1D1 Rabbit monoclonal antibody (STJ11103310) at 1:1000 dilution. Secondary antibody: HRP Goat Anti-Rabbit IgG (H+L) (STJS000856) at 1:10000 dilution. Lysates/proteins: 25 Mu g per lane. Blocking buffer: 3% nonfat dry milk in TBST. Detection: ECL Basic Kit. Exposure time: 10s.