

Anti-Prdm9 antibody (87-370) (STJ11103305)

GENERAL INFORMATION

Product Type	Primary antibodies
Applications	IF/ICC/ELISA
Host / Source	Rabbit
Reactivity	Mouse/Rat

PRODUCT PROPERTIES

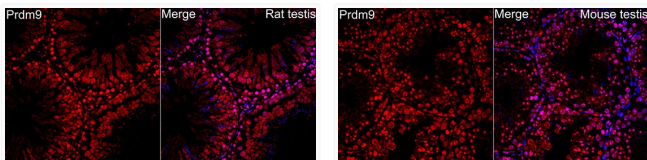
Clonality	Polyclonal
Concentration	Lot specific
Conjugation	Unconjugated
Purification	Affinity purification
Dilution Range	IF/ICC:1:50-1:200 ELISA:Recommended starting concentration is 1 µg/mL. Please optimize the concentration based on your specific assay requirements.
Formulation	PBS with 0.05% Proclin300, 50% Glycerol, pH 7.3.
Isotype	IgG
Molecular Weight	Protein Mw: 97kDa Observed Mw: Refer to figures
Storage Instruction	Store at-20°C for up to 1 year from the date of receipt, and avoid repeat freeze-thaw cycles.

TARGET INFORMATION

Gene ID	213389
Gene Symbol	Prdm9
UniProt ID	PRDM9_MOUSE
Immunogen Region	87-370
Immunogen Sequence	DSEDSDEEWTPKQQVSPWPV PFRVKHSKQQKESRMPFSG ESNVKEGSGIENLLNTSGSE HVQKPVSSLEEGNTSGQHSG KKLKLRKKNVEVKMYRLRER KGLAYEEVSEPQDDDDYLYCE KQNFIDSCPNHGPPLFVK DSMVDRGHPNHSVLSLPPGL RISPSGIPEAGLVWNEASD LPVGLHFGPYEGQITEDEEA ANSGYSWLITKGRNCYEYVD GQDESQANWMRYVNCARDD
Specificity	Recombinant fusion protein containing a sequence corresponding to amino acids 87-370 of mouse Prdm9 (NP_659058.3).

ADDITIONAL INFORMATION

Note STRICTLY FOR FURTHER SCIENTIFIC RESEARCH USE ONLY (RUO). MUST NOT TO BE USED IN DIAGNOSTIC OR THERAPEUTIC APPLICATIONS.



Immunofluorescence analysis of rat testis using Prdm9 Rabbit polyclonal antibody (STJ11103305) at dilution of 1:100 (40x lens). Secondary antibody: Cy3 Goat Anti-Rabbit IgG (H+L) at 1:500 dilution. Blue: DAPI for nuclear staining.

Immunofluorescence analysis of mouse testis using Prdm9 Rabbit polyclonal antibody (STJ11103305) at dilution of 1:100 (40x lens). Secondary antibody: Cy3 Goat Anti-Rabbit IgG (H+L) at 1:500 dilution. Blue: DAPI for nuclear staining.