

Anti-SARS-CoV-2-NSP10 antibody (1-139) (STJ11103272)

GENERAL INFORMATION

Product Type	Primary antibodies
Applications	WB/IP/ELISA
Host / Source	Rabbit
Reactivity	SARS-CoV-2

PRODUCT PROPERTIES

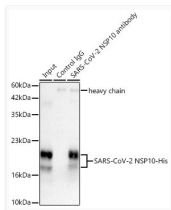
Clonality	Polyclonal
Concentration	Lot specific
Conjugation	Unconjugated
Purification	Affinity purification
Dilution Range	WB:1:2000-1:10000 IP:0.5 Mu g-4 Mu g antibody for 200 Mu g-600 Mu g extracts of whole cells ELISA:Recommended starting concentration is 1 Mu g/mL. Please optimize the concentration based on your specific assay requirements.
Formulation	PBS with 0.05% Proclin300, 50% Glycerol, pH 7.3.
Isotype	IgG
Molecular Weight	Protein Mw: 794kDa Observed Mw: 20-25kDa/
Storage Instruction	Store at -20°C for up to 1 year from the date of receipt, and avoid repeat freeze-thaw cycles.

TARGET INFORMATION

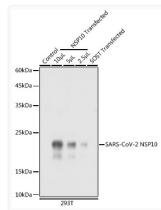
Immunogen Region	1-139
Immunogen Sequence	AGNATEVVPANSTVLSFCAFA VDAAKAYKDYLASGGQPITN CVKMLCTHTGTGQAITVTPE ANMDQESFGGASCCLYCRCH IDHPNPKGFCDLKGKVVQIP TTCANDPVGFTLKNTVCTVC GMWKGYGCSCDQLREPMLQ
Specificity	Recombinant fusion protein containing a sequence corresponding to amino acids 1-139 of coronavirus NSP10 (YP_009725306.1).

ADDITIONAL INFORMATION

Note **STRICTLY FOR FURTHER SCIENTIFIC RESEARCH USE ONLY (RUO). MUST NOT TO BE USED IN DIAGNOSTIC OR THERAPEUTIC APPLICATIONS.**



Immunoprecipitation of SARS-CoV-2 NSP10 from 300 µg extracts of 293T cells transfected with SARS-CoV-2 NSP10 was performed using 2 µg of SARS-CoV-2 NSP10 Rabbit polyclonal antibody (STJ11103272). Rabbit IgG isotype control was used to precipitate the Control IgG sample. IP samples were eluted with 1X Laemmli Buffer. The Input lane represents 10 % of the total input. Western blot analysis of immunoprecipitates was conducted using SARS-CoV-2 NSP10 Rabbit polyclonal antibody (STJ11103272) at a dilution of 1:4000.



Western blot analysis of extracts of normal 293T cells, 293T transfected with NSP10 Protein and 293T transfected with SOST Protein, using SARS-CoV-2 NSP10 Rabbit polyclonal antibody (STJ11103272) at 1:10000 dilution. Secondary antibody: HRP Goat Anti-Rabbit IgG (H+L) (STJS000856) at 1:10000 dilution. Lysates/proteins: 25 µg per lane. Blocking buffer: 3% nonfat dry milk in TBST. Detection: ECL Basic Kit. Exposure time: 1s.