

Anti-SARS-CoV-2-NSP6 antibody (236-290) (STJ11103270)

GENERAL INFORMATION

Product Type	Primary antibodies
Applications	WB/ELISA
Host / Source	Rabbit
Reactivity	SARS-CoV-2

PRODUCT PROPERTIES

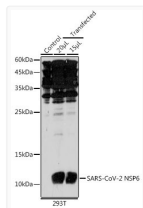
Clonality	Polyclonal
Concentration	Lot specific
Conjugation	Unconjugated
Purification	Affinity purification
Dilution Range	WB:1:500-1:1000 ELISA:Recommended starting concentration is 1 Mu g/mL. Please optimize the concentration based on your specific assay requirements.
Formulation	PBS with 0.05% Proclin300, 50% Glycerol, pH 7.3.
Isotype	IgG
Molecular Weight	Protein Mw: 794kDa Observed Mw: 10kDa
Storage Instruction	Store at -20°C for up to 1 year from the date of receipt, and avoid repeat freeze-thaw cycles.

TARGET INFORMATION

Immunogen Region	236-290
Immunogen Sequence	RLTLGVYDYLSTQEFYRMYN SQGLLPPKNSIDAFKLNKL LGVGGKPCIKVATVQ
Specificity	Recombinant fusion protein containing a sequence corresponding to amino acids 236-290 of coronavirus NSP6 (YP_009725302.1).

ADDITIONAL INFORMATION

Note STRICTLY FOR FURTHER SCIENTIFIC RESEARCH USE ONLY (RUO). MUST NOT TO BE USED IN DIAGNOSTIC OR THERAPEUTIC APPLICATIONS.



Western blot analysis of extracts of normal 293T cells and 293T transfected with NSP6 Protein, using SARS-CoV-2 NSP6 Rabbit polyclonal antibody (STJ11103270) at 1:1000 dilution. Secondary antibody: HRP Goat Anti-Rabbit IgG (H+L) (STJS000856) at 1:10000 dilution. Lysates/proteins: 25 Mu g per lane. Blocking buffer: 3% nonfat dry milk in TBST. Detection: ECL Basic Kit. Exposure time: 180s.