

Anti-RPS6KA1/RPS6KA2/RPS6KA3 antibody (600-700) (STJ11103257)

GENERAL INFORMATION

Product Type	Primary antibodies
Applications	WB/IHC-P/IF/ICC/ELISA
Host / Source	Rabbit
Reactivity	Human/Mouse/Rat

PRODUCT PROPERTIES

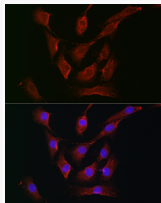
Clonality	Polyclonal
Concentration	Lot specific
Conjugation	Unconjugated
Purification	Affinity purification
Dilution Range	WB:1:500-1:1000 IHC-P:1:50-1:200 IF/ICC:1:50-1:200 ELISA:Recommended starting concentration is 1 μ g/mL. Please optimize the concentration based on your specific assay requirements.
Formulation	PBS with 0.05% Proclin300, 50% Glycerol, pH7.3.
Isotype	IgG
Molecular Weight	83kDa
Storage Instruction	Store at -20°C for up to 1 year from the date of receipt, and avoid repeat freeze-thaw cycles.

TARGET INFORMATION

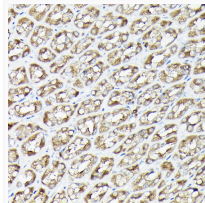
Gene ID	6196 6197 6195 RPS6KA2 RPS6KA3 KS6A2_HUMAN KS6A3_HUMAN KS6A1_HUMAN
Immunogen Region	600-700
Immunogen Sequence	LGILLYTMLAGYTPFANGPS DTPEILTRIGSGKFTLSGG NWNTVSETAKDLVSKMLHVD PHQRLTAKVQLQHPWVTQKD KLPQSQLSHQDLQLVKGAMA A
Specificity	A synthetic peptide corresponding to a sequence within amino acids 600-700 of human RPS6KA1/RPS6KA2/RPS6KA3 (NP_002944.2).

ADDITIONAL INFORMATION

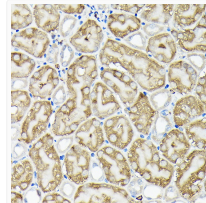
Note STRICTLY FOR FURTHER SCIENTIFIC RESEARCH USE ONLY (RUO). MUST NOT TO BE USED IN DIAGNOSTIC OR THERAPEUTIC APPLICATIONS.



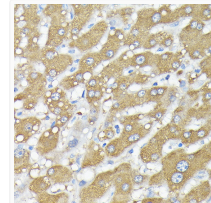
Immunofluorescence analysis of NIH-3T3 cells using RPS6KA1/RPS6KA2/RPS6KA3 Rabbit polyclonal antibody (STJ11103257) at dilution of 1:200 (40x lens). Secondary antibody: Cy3 Goat Anti-Rabbit IgG (H+L) at 1:500 dilution. Blue: DAPI for nuclear staining.



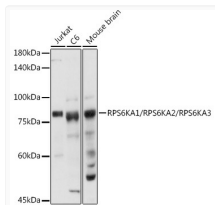
Immunohistochemistry analysis of RPS6KA1/RPS6KA2/RPS6KA3 in paraffin-embedded rat stomach using RPS6KA1/RPS6KA2/RPS6KA3 Rabbit polyclonal antibody (STJ11103257) at dilution of 1:200 (40x lens). Perform high pressure antigen retrieval with 10 mM citrate buffer pH 6.0 before commencing with immunohistochemistry staining protocol.



Immunohistochemistry analysis of RPS6KA1/RPS6KA2/RPS6KA3 in paraffin-embedded mouse kidney using RPS6KA1/RPS6KA2/RPS6KA3 Rabbit polyclonal antibody (STJ11103257) at dilution of 1:200 (40x lens). Perform high pressure antigen retrieval with 10 mM citrate buffer pH 6.0 before commencing with immunohistochemistry staining protocol.



Immunohistochemistry analysis of RPS6KA1/RPS6KA2/RPS6KA3 in paraffin-embedded human liver using RPS6KA1/RPS6KA2/RPS6KA3 Rabbit polyclonal antibody (STJ11103257) at dilution of 1:200 (40x lens). Perform high pressure antigen retrieval with 10 mM citrate buffer pH 6.0 before commencing with immunohistochemistry staining protocol.



Western blot analysis of various lysates using RPS6KA1/RPS6KA2/RPS6KA3 Rabbit polyclonal antibody (STJ11103257) at 1:1000 dilution. Secondary antibody: HRP Goat Anti-Rabbit IgG (H+L) (STJS000856) at 1:10000 dilution. Lysates/proteins: 25 μ g per lane. Blocking buffer: 3% nonfat dry milk in TBST. Detection: ECL Basic Kit. Exposure time: 10s.