

## Anti-SARS-CoV-2-NSP16 antibody (236-290) (STJ11103255)

### GENERAL INFORMATION

Product Type	Primary antibodies
Applications	WB/ELISA
Host / Source	Rabbit
Reactivity	SARS-CoV-2

### PRODUCT PROPERTIES

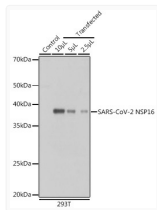
Clonality	Polyclonal
Concentration	Lot specific
Conjugation	Unconjugated
Purification	Affinity purification
Dilution Range	WB:1:2000-1:6000 ELISA:Recommended starting concentration is 1 µg/mL. Please optimize the concentration based on your specific assay requirements.
Formulation	PBS with 0.05% Proclin300, 50% Glycerol, pH7.3.
Isotype	IgG
Molecular Weight	Protein Mw: 794kDa Observed Mw: 37kDa
Storage Instruction	Store at -20°C for up to 1 year from the date of receipt, and avoid repeat freeze-thaw cycles.

### TARGET INFORMATION

Immunogen Region	236-290
Immunogen Sequence	HEIAWYTERSEKSYELQTPF EIKLAKKFDTFNGECPNFVF PLNSIIKTIQPRVEKKKLDG FMGRIRSVYPVASPNECNQM CLSTLMKCDHCGETSWQTGD FVKATCFEFCGTENLTKEGAT TCGYLPQNAVVKIYCPACHN SEVGPEHSLAEYHNESGLKT ILRKGGRITAFGGCVFSYVVG CHNKCAYWVPRASANIGCNH TGVVGESEGLNDNLLEILQ KEKVNINIVGDFKLNEEIA
Specificity	Recombinant fusion protein containing a sequence corresponding to amino acids 236-290 of coronavirus NSP16 (YP_009725302.1).

### ADDITIONAL INFORMATION

Note	STRICTLY FOR FURTHER SCIENTIFIC RESEARCH USE ONLY (RUO). MUST NOT TO BE USED IN DIAGNOSTIC OR THERAPEUTIC APPLICATIONS.
------	---



Western blot analysis of extracts of normal 293T cells and 293T transfected with NSP16 Protein, using SARS-CoV-2 NSP16 Rabbit polyclonal antibody (STJ11103255) at 1:5000 dilution. Secondary antibody: HRP Goat Anti-Rabbit IgG (H+L) (STJS000856) at 1:10000 dilution. Lysates/proteins: 25 µg per lane. Blocking buffer: 3% nonfat dry milk in TBST. Detection: ECL Basic Kit. Exposure time: 1s.