

Anti-CCR5 antibody (246-345) (STJ11103247)

GENERAL INFORMATION

Product Type	Primary antibodies
Applications	WB/IF/ICC/ELISA
Host / Source	Rabbit
Reactivity	Human/Mouse/Rat

PRODUCT PROPERTIES

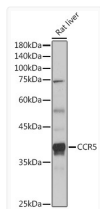
Clonality	Polyclonal
Concentration	Lot specific
Conjugation	Unconjugated
Purification	Affinity purification
Dilution Range	WB:1:500-1:1000 IF/CC:1:50-1:200 ELISA:Recommended starting concentration is 1 Mu g/mL. Please optimize the concentration based on your specific assay requirements.
Formulation	PBS with 0.05% Proclin300, 50% Glycerol, pH 7.3.
Isotype	IgG
Molecular Weight	Protein Mw: 41kDa Observed Mw: 41kDa
Storage Instruction	Store at -20°C for up to 1 year from the date of receipt, and avoid repeat freeze-thaw cycles.

TARGET INFORMATION

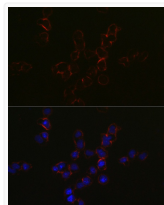
Gene ID	1234
Gene Symbol	CCR5
UniProt ID	CCR5_HUMAN
Immunogen Region	246-345
Immunogen Sequence	LFWAPYNIIVLLNTFQEFFG LNNCSSNRRLDQAMQVTETL GMTHCCINPIIYAFVGEKFR NYLLVFFQKHIAKRFCKCCS IFQQEAPERASSVYTRSTGE
Specificity	A synthetic peptide corresponding to a sequence within amino acids 246-345 of human CCR5 (NP_000570.1).

ADDITIONAL INFORMATION

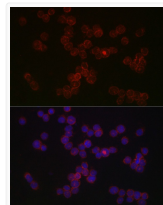
Note STRICTLY FOR FURTHER SCIENTIFIC RESEARCH USE ONLY (RUO). MUST NOT TO BE USED IN DIAGNOSTIC OR THERAPEUTIC APPLICATIONS.



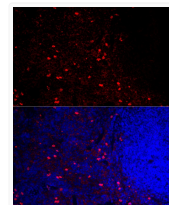
Western blot analysis of extracts of Rat liver, using CCR5 antibody (STJ11103247) at 1:1000 dilution. Secondary antibody: HRP Goat Anti-rabbit IgG (H+L) (STJS000856) at 1:10000 dilution. Lysates/proteins: 25 Mu g per lane. Blocking buffer: 3% non-fat dry milk in TBST. Detection: ECL Basic Kit. Exposure time: 10s.



Immunofluorescence analysis of Jurkat cells using CCR5 rabbit polyclonal antibody (STJ11103247) at dilution of 1:50 (40x lens). Blue: DAPI for nuclear staining.



Immunofluorescence analysis of THP-1 cells using CCR5 rabbit polyclonal antibody (STJ11103247) at dilution of 1:50 (40x lens). Blue: DAPI for nuclear staining.



Immunofluorescence analysis of mouse spleen cells using CCR5 rabbit polyclonal antibody (STJ11103247) at dilution of 1:100 (40x lens). Blue: DAPI for nuclear staining.