

Anti-Nesprin 1 antibody (8220-8410) (STJ11103244)

GENERAL INFORMATION

Product Type	Primary antibodies
Applications	WB/IHC-P/IF/ICC/ELISA
Host / Source	Rabbit
Reactivity	Human/Mouse/Rat

PRODUCT PROPERTIES

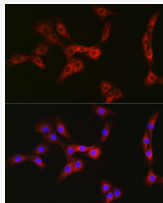
Clonality	Polyclonal
Concentration	Lot specific
Conjugation	Unconjugated
Purification	Affinity purification
Dilution Range	WB:1:500-1:1000 IHC-P:1:50-1:200 IF/CC:1:50-1:200 ELISA:Recommended starting concentration is 1 μ g/mL. Please optimize the concentration based on your specific assay requirements.
Formulation	PBS with 0.01% Thimerosal, 50% Glycerol, pH 7.3.
Isotype	IgG
Molecular Weight	Protein Mw: 1011kDa Observed Mw: 131kDa
Storage Instruction	Store at -20°C for up to 1 year from the date of receipt, and avoid repeat freeze-thaw cycles.

TARGET INFORMATION

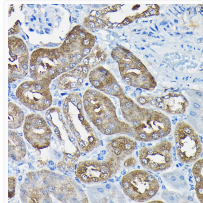
Gene ID	23345
Gene Symbol	SYNE1
UniProt ID	SYNE1_HUMAN
Immunogen Region	8220-8410
Immunogen Sequence	HDLSDRELEEDSAALSDLH WHDRSADSLLSQPSSNLSL SLAQPLRSERSGRDTPASVD SIPLEWDHDDYDLSRDLESAM SRALPSEDEEGQDDKDFYLR GAVGLSGDHSALQSIRQLG KALDDSRFQIQQTENIIRSK TPTGPELDTSYKGYMKLLGE CSSSIDSVKRLHKLKEEEE SLPGFVNLHST
Specificity	Recombinant fusion protein containing a sequence corresponding to amino acids 8220-8410 of human Nesprin 1 (NP_892006.3).

ADDITIONAL INFORMATION

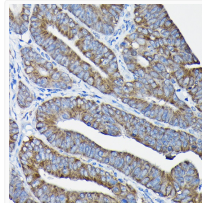
Note **STRICTLY FOR FURTHER SCIENTIFIC RESEARCH USE ONLY (RUO). MUST NOT TO BE USED IN DIAGNOSTIC OR THERAPEUTIC APPLICATIONS.**



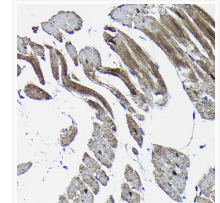
Immunofluorescence analysis of NIH/3T3 cells using Nesprin 1 Rabbit polyclonal antibody (STJ11103244) at dilution of 1:100 (40x lens). Secondary antibody: Cy3 Goat Anti-Rabbit IgG (H+L) at 1:500 dilution. Blue: DAPI for nuclear staining.



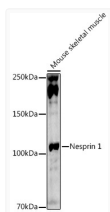
Immunohistochemistry analysis of Nesprin 1 in paraffin-embedded mouse kidney using Nesprin 1 Rabbit polyclonal antibody (STJ11103244) at dilution of 1:100 (40x lens). Perform high pressure antigen retrieval with 10 mM citrate buffer pH 6.0 before commencing with immunohistochemistry staining protocol.



Immunohistochemistry analysis of Nesprin 1 in paraffin-embedded human colon carcinoma using Nesprin 1 Rabbit polyclonal antibody (STJ11103244) at dilution of 1:100 (40x lens). Perform high pressure antigen retrieval with 10 mM citrate buffer pH 6.0 before commencing with immunohistochemistry staining protocol.



Immunohistochemistry analysis of Nesprin 1 in paraffin-embedded rat heart using Nesprin 1 Rabbit polyclonal antibody (STJ11103244) at dilution of 1:100 (40x lens). Perform high pressure antigen retrieval with 10 mM citrate buffer pH 6.0 before commencing with immunohistochemistry staining protocol.



Western blot analysis of lysates from mouse skeletal muscle, using Nesprin 1 Rabbit polyclonal antibody (STJ11103244) at 1:1000 dilution. Secondary antibody: HRP Goat Anti-Rabbit IgG (H+L) (STJS000856) at 1:10000 dilution. Lysates/proteins: 25 μ g per lane. Blocking buffer: 3% nonfat dry milk in TBST. Detection: ECL Basic Kit. Exposure time: 90s.