

## Anti-CCR3 antibody (146-226) (STJ11103242)

### GENERAL INFORMATION

Product Type	Primary antibodies
Applications	WB/IHC-P/ELISA
Host / Source	Rabbit
Reactivity	Human/Mouse/Rat

### PRODUCT PROPERTIES

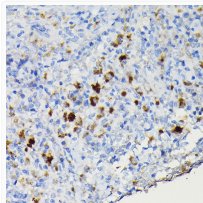
Clonality	Polyclonal
Concentration	Lot specific
Conjugation	Unconjugated
Purification	Affinity purification
Dilution Range	WB:1:500-1:1000 IHC-P:1:50-1:200 ELISA:Recommended starting concentration is 1 $\mu$ g/mL. Please optimize the concentration based on your specific assay requirements.
Formulation	PBS with 0.01% Thimerosal, 50% Glycerol, pH 7.3.
Isotype	IgG
Molecular Weight	Protein Mw: 41kDa Observed Mw: 50kDa
Storage Instruction	Store at -20°C for up to 1 year from the date of receipt, and avoid repeat freeze-thaw cycles.

### TARGET INFORMATION

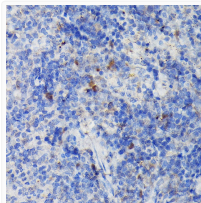
Gene ID	<a href="#">1232</a>
Gene Symbol	<a href="#">CCR3</a>
UniProt ID	<a href="#">CCR3_HUMAN</a>
Immunogen Region	146-226
Immunogen Sequence	TVTFGVITSIVTWGLAVLAA LPEFIFYETEELFEETLCSA LYPEDTVYSWRHFHTLRMTI FCLVLLPLLVMAICYTGIIKT L
Specificity	Recombinant fusion protein containing a sequence within amino acids 146-226 of human CCR3 (NP_001828.1).

### ADDITIONAL INFORMATION

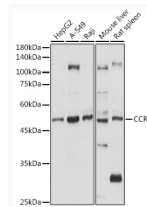
Note STRICTLY FOR FURTHER SCIENTIFIC RESEARCH USE ONLY (RUO). MUST NOT TO BE USED IN DIAGNOSTIC OR THERAPEUTIC APPLICATIONS.



Immunohistochemistry analysis of CCR3 in paraffin-embedded mouse spleen using CCR3 Rabbit polyclonal antibody (STJ11103242) at dilution of 1:100 (40x lens). Perform high pressure antigen retrieval with 10 mM citrate buffer pH 6.0 before commencing with immunohistochemistry staining protocol.



Immunohistochemistry analysis of CCR3 in paraffin-embedded rat spleen using CCR3 Rabbit polyclonal antibody (STJ11103242) at dilution of 1:100 (40x lens). Perform high pressure antigen retrieval with 10 mM citrate buffer pH 6.0 before commencing with immunohistochemistry staining protocol.



Western blot analysis of various lysates using CCR3 Rabbit polyclonal antibody (STJ11103242) at 1:1000 dilution. Secondary antibody: HRP Goat Anti-Rabbit IgG (H+L) (STJS000856) at 1:10000 dilution. Lysates/proteins: 25  $\mu$ g per lane. Blocking buffer: 3% nonfat dry milk in TBST. Detection: ECL Basic Kit. Exposure time: 30s.