

Anti-EIF4A1/EIF4A2/EIF4A3 antibody (1-100) (STJ11103240)

GENERAL INFORMATION

Product Type	Primary antibodies
Applications	WB/IF/ICC/ELISA
Host / Source	Rabbit
Reactivity	Human/Mouse/Rat

PRODUCT PROPERTIES

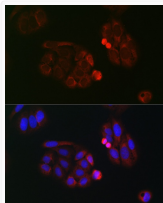
Clonality	Polyclonal
Concentration	Lot specific
Conjugation	Unconjugated
Purification	Affinity purification
Dilution Range	WB:1:500-1:1000 IF/CC:1:50-1:200 ELISA:Recommended starting concentration is 1 Mu g/mL. Please optimize the concentration based on your specific assay requirements.
Formulation	PBS with 0.05% Proclin300, 50% Glycerol, pH 7.3.
Isotype	IgG
Molecular Weight	46kDa
Storage Instruction	Store at -20°C for up to 1 year from the date of receipt, and avoid repeat freeze-thaw cycles.

TARGET INFORMATION

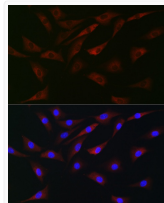
Gene ID	9775 1973 1974 EIF4A3 EIF4A1 IF4A3_HUMAN IF4A1_HUMAN IF4A2_HUMAN
Immunogen Region	1-100
Immunogen Sequence	MSASQDSRSRDNGPDGMEPE GVIESNWNEIVDSFDDMNLSELLRGIYAYGF EKPSAIQQ RAILPCIKGYDVIAQAQSGT GKTATFAISILQQIELDLKA
Specificity	A synthetic peptide corresponding to a sequence within amino acids 1-100 of human eIF4A (NP_001407.1).

ADDITIONAL INFORMATION

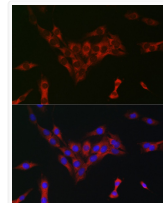
Note STRICTLY FOR FURTHER SCIENTIFIC RESEARCH USE ONLY (RUO). MUST NOT TO BE USED IN DIAGNOSTIC OR THERAPEUTIC APPLICATIONS.



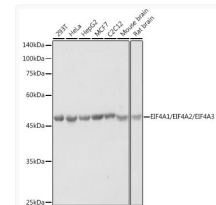
Immunofluorescence analysis of U-2 OS cells using eIF4A Rabbit polyclonal antibody (STJ11103240) at dilution of 1:100 (40x lens). Blue: DAPI for nuclear staining.



Immunofluorescence analysis of NIH-3T3 cells using eIF4A Rabbit polyclonal antibody (STJ11103240) at dilution of 1:100 (40x lens). Blue: DAPI for nuclear staining.



Immunofluorescence analysis of C6 cells using eIF4A Rabbit polyclonal antibody (STJ11103240) at dilution of 1:100 (40x lens). Blue: DAPI for nuclear staining.



Western blot analysis of extracts of various cell lines, using eIF4A antibody (STJ11103240) at 1:1000 dilution. Secondary antibody: HRP Goat Anti-Rabbit IgG (H+L) (STJS000856) at 1:10000 dilution. Lysates/proteins: 25 Mu g per lane. Blocking buffer: 3% nonfat dry milk in TBST. Detection: ECL Basic Kit. Exposure time: 1s.