

## Anti-Non-phospho-YAP1-S127 antibody (50-150) (STJ11103239)

### GENERAL INFORMATION

Product Type	Primary antibodies
Applications	WB/IHC-P/ELISA
Host / Source	Rabbit
Reactivity	Human/Mouse/Rat

### PRODUCT PROPERTIES

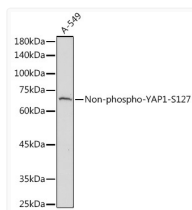
Clonality	Polyclonal
Concentration	Lot specific
Conjugation	Unconjugated
Purification	Affinity purification
Dilution Range	WB:1:500-1:1000 IHC-P:1:50-1:200 ELISA:Recommended starting concentration is 1 Mu g/mL. Please optimize the concentration based on your specific assay requirements.
Formulation	PBS with 0.09% Sodium Azide, 50% Glycerol, pH 7.3.
Isotype	IgG
Molecular Weight	Protein Mw: 54kDa Observed Mw: 68kDa
Storage Instruction	Store at -20°C for up to 1 year from the date of receipt, and avoid repeat freeze-thaw cycles.

### TARGET INFORMATION

Gene ID	<a href="#">10413</a>
Gene Symbol	<a href="#">YAP1</a>
UniProt ID	<a href="#">YAP1_HUMAN</a>
Immunogen Region	50-150
Immunogen Sequence	AGHQIVHVRGDSETDLEALF NAVMNPKTANVPQTPMRLR KLPDSFFKPPEPKSHSRQAS TDAGTAGALTPQHVAHSSP ASLQLGAVSPGTLTPTGVVS G
Specificity	A synthetic peptide corresponding to a sequence within amino acids 50-150 of human YAP1 (NP_001123617.1).

### ADDITIONAL INFORMATION

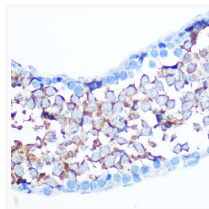
Note STRICTLY FOR FURTHER SCIENTIFIC RESEARCH USE ONLY (RUO). MUST NOT TO BE USED IN DIAGNOSTIC OR THERAPEUTIC APPLICATIONS.



Western blot analysis of lysates from A-549 cells, using Non-phospho-YAP1-S127 Rabbit pAb (STJ11103239) at 1:1000 dilution.

Secondary antibody: HRP-conjugated Goat anti-Rabbit IgG (H+L) (STJS000856) at 1:10000 dilution.

Lysates/proteins: 25 Mu g per lane.  
Blocking buffer: 3% nonfat dry milk in TBST.  
Detection: ECL Basic Kit  
Exposure time: 180s.



Immunohistochemistry analysis of paraffin-embedded Mouse testis using Non-phospho-YAP1-S127 Rabbit pAb (STJ11103239) at dilution of 1:100 (40x lens). Microwave antigen retrieval performed with 0.01M Tris/EDTA Buffer (pH 9.0) prior to immunohistochemistry staining.