

Anti-SARS-CoV-2-NSP3 antibody (1-200) (STJ11103236)

GENERAL INFORMATION

Product Type	Primary antibodies
Applications	WB/ELISA
Host / Source	Rabbit
Reactivity	SARS-CoV-2

PRODUCT PROPERTIES

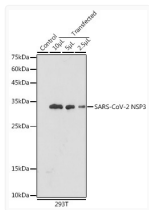
Clonality	Polyclonal
Concentration	Lot specific
Conjugation	Unconjugated
Purification	Affinity purification
Dilution Range	WB:1:2000-1:6000 ELISA:Recommended starting concentration is 1 µg/mL. Please optimize the concentration based on your specific assay requirements.
Formulation	PBS with 0.01% Thimerosal, 50% Glycerol, pH 7.3.
Isotype	IgG
Molecular Weight	Protein Mw: 794kDa Observed Mw: 33kDa
Storage Instruction	Store at -20°C for up to 1 year from the date of receipt, and avoid repeat freeze-thaw cycles.

TARGET INFORMATION

Immunogen Region	1-200
Immunogen Sequence	MAPTKVTFGDDTVIEVQGYK SVNITFELDERIDKVLNEKC SAYTVELGTEVNEFACVVAD AVIKTLQPVSELLTPLGIDL DEWSMATYYLFDESGEFKLA SHMYCSFYPPDEDEEEGDCE EEEEFPSTQYEYGTEDDYQG KPLEFGATSAALQPEEEQEE DWLDDDSQQTGVQQDGSSEDN QTTTIQTIVEVQPQLEMELT
Specificity	Recombinant fusion protein containing a sequence corresponding to amino acids 1-200 of coronavirus NSP3 (YP_009725299.1).

ADDITIONAL INFORMATION

Note **STRICTLY FOR FURTHER SCIENTIFIC RESEARCH USE ONLY (RUO). MUST NOT TO BE USED IN DIAGNOSTIC OR THERAPEUTIC APPLICATIONS.**



Western blot analysis of extracts of normal 293T cells 293T transfected with NSP3 Protein, using SARS-CoV-2 NSP3 Rabbit polyclonal antibody (STJ11103236) at 1:5000 dilution. Secondary antibody: HRP Goat Anti-Rabbit IgG (H+L) (STJS000856) at 1:10000 dilution. Lysates/proteins: 25 µg per lane. Blocking buffer: 3% nonfat dry milk in TBST. Detection: ECL Basic Kit. Exposure time: 30s.