

Anti-RING1A antibody (207-406) (STJ11103202)

GENERAL INFORMATION

Product Type	Primary antibodies
Applications	WB/IHC-P/ELISA
Host / Source	Rabbit
Reactivity	Human/Mouse/Rat

PRODUCT PROPERTIES

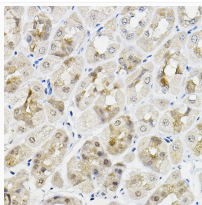
Clonality	Polyclonal
Concentration	Lot specific
Conjugation	Unconjugated
Purification	Affinity purification
Dilution Range	WB:1:500-1:1000 IHC-P:1:50-1:200 ELISA:Recommended starting concentration is 1 Mu g/mL. Please optimize the concentration based on your specific assay requirements.
Formulation	PBS with 0.01% Thimerosal, 50% Glycerol, pH 7.3.
Isotype	IgG
Molecular Weight	Protein Mw: 42kDa Observed Mw: 54kDa
Storage Instruction	Store at -20°C for up to 1 year from the date of receipt, and avoid repeat freeze-thaw cycles.

TARGET INFORMATION

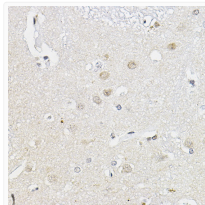
Gene ID	6015
Gene Symbol	RING1
UniProt ID	RING1_HUMAN
Immunogen Region	207-406
Immunogen Sequence	GAGGSSVGTGGGGTGGVGGG AGSEDSGDRGGTLGGGTLGP PSPPGAPSPPEPGGEIELVF RPHPLLVEKGEYCQTRYVKT TGNATVDHLSKYLALRIALE RRQQQEAGEPGGGPGGASDT GGPDGCGGEGGGAGGGDGPE EPALPSLEGVSEKQYTIYA PGGGAFTTLNGSLTELVNE KFWKVSRLPLELCYAPTKDKP
Specificity	Recombinant fusion protein containing a sequence corresponding to amino acids 207-406 of human RING1A A (NP_002922.2).

ADDITIONAL INFORMATION

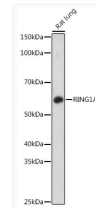
Note **STRICTLY FOR FURTHER SCIENTIFIC RESEARCH USE ONLY (RUO). MUST NOT TO BE USED IN DIAGNOSTIC OR THERAPEUTIC APPLICATIONS.**



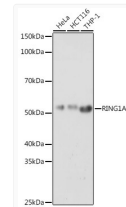
Immunohistochemistry analysis of RING1A in paraffin-embedded mouse stomach using RING1A Rabbit polyclonal antibody (STJ11103202) at dilution of 1:100 (40x lens). Perform high pressure antigen retrieval with 10 mM citrate buffer pH 6.0 before commencing with immunohistochemistry staining protocol.



Immunohistochemistry analysis of RING1A in paraffin-embedded human brain using RING1A Rabbit polyclonal antibody (STJ11103202) at dilution of 1:100 (40x lens). Perform high pressure antigen retrieval with 10 mM citrate buffer pH 6.0 before commencing with immunohistochemistry staining protocol.



Western blot analysis of lysates from Rat lung, using RING1A Rabbit polyclonal antibody (STJ11103202) at 1:1000 dilution. Secondary antibody: HRP Goat Anti-Rabbit IgG (H+L) (STJS000856) at 1:10000 dilution. Lysates/proteins: 25 Mu g per lane. Blocking buffer: 3% nonfat dry milk in TBST. Detection: ECL Basic Kit. Exposure time: 180s.



Western blot analysis of various lysates using RING1A Rabbit polyclonal antibody (STJ11103202) at 1:1000 dilution. Secondary antibody: HRP Goat Anti-Rabbit IgG (H+L) (STJS000856) at 1:10000 dilution. Lysates/proteins: 25 Mu g per lane. Blocking buffer: 3% nonfat dry milk in TBST. Detection: ECL Basic Kit. Exposure time: 10s.