

Anti-PDE4A antibody (325-410) (STJ11103193)

GENERAL INFORMATION

Product Type	Primary antibodies
Applications	WB/IHC-P/IF/ICC/ELISA
Host / Source	Rabbit
Reactivity	Human/Mouse/Rat

PRODUCT PROPERTIES

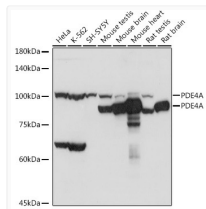
Clonality	Polyclonal
Concentration	Lot specific
Conjugation	Unconjugated
Purification	Affinity purification
Dilution Range	WB:1:500-1:1000 IHC-P:1:50-1:200 IF/CC:1:50-1:200 ELISA:Recommended starting concentration is 1 µg/mL. Please optimize the concentration based on your specific assay requirements.
Formulation	PBS with 0.05% Proclin300, 50% Glycerol, pH 7.3.
Isotype	IgG
Molecular Weight	Protein Mw: 98kDa Observed Mw: 80kDa/110kDa
Storage Instruction	Store at -20°C for up to 1 year from the date of receipt, and avoid repeat freeze-thaw cycles.

TARGET INFORMATION

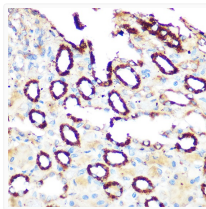
Gene ID	5141
Gene Symbol	PDE4A
UniProt ID	PDE4A_HUMAN
Immunogen Region	325-410
Immunogen Sequence	PVPHLQPMQITGLKMLHS NSLNNSNIPRFGVKTDQEEL LAQELENLNKWLNIFCVSD YAGGRSLTCIMYMFQERDL LKKFRI
Specificity	Recombinant fusion protein containing a sequence corresponding to amino acids 325-410 of human PDE4A (NP_001104777.1).

ADDITIONAL INFORMATION

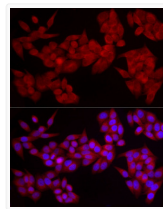
Note **STRICTLY FOR FURTHER SCIENTIFIC RESEARCH USE ONLY (RUO). MUST NOT TO BE USED IN DIAGNOSTIC OR THERAPEUTIC APPLICATIONS.**



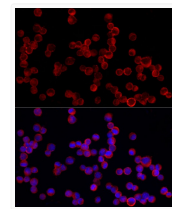
Western blot analysis of extracts of various cell lines, using PDE4A antibody (STJ11103193) at 1:1000 dilution. Secondary antibody: HRP Goat Anti-rabbit IgG (H+L) (STJS000856) at 1:10000 dilution. Lysates/proteins: 25 µg per lane. Blocking buffer: 3% non-fat dry milk in TBST. Detection: ECL Basic Kit. Exposure time: 3s.



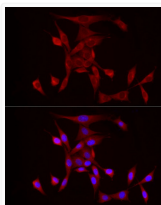
Immunohistochemistry analysis of paraffin-embedded rat kidney using PDE4A rabbit polyclonal antibody (STJ11103193) at dilution of 1:100 (40x lens). Perform microwave antigen retrieval with 10 mM Tris/EDTA buffer pH 9.0 before commencing with immunohistochemistry staining protocol.



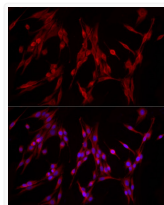
Immunofluorescence analysis of HeLa cells using PDE4A rabbit polyclonal antibody (STJ11103193) at dilution of 1:20 (40x lens). Blue: DAPI for nuclear staining.



Immunofluorescence analysis of K-562 cells using PDE4A rabbit polyclonal antibody (STJ11103193) at dilution of 1:20 (40x lens). Blue: DAPI for nuclear staining.



Immunofluorescence analysis of NIH/3T3 cells using PDE4A rabbit polyclonal antibody (STJ11103193) at dilution of 1:20 (40x lens). Blue: DAPI for nuclear staining.



Immunofluorescence analysis of PC-12 cells using PDE4A rabbit polyclonal antibody (STJ11103193) at dilution of 1:20 (40x lens). Blue: DAPI for nuclear staining.