

Anti-SETD1B antibody (1673-1770) (STJ11103186)

GENERAL INFORMATION

Product Type	Primary antibodies
Applications	WB/ELISA
Host / Source	Rabbit
Reactivity	Human/Mouse/Rat

PRODUCT PROPERTIES

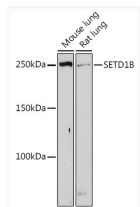
Clonality	Polyclonal
Concentration	Lot specific
Conjugation	Unconjugated
Purification	Affinity purification
Dilution Range	WB:1:100-1:500 ELISA:Recommended starting concentration is 1 Mu g/mL. Please optimize the concentration based on your specific assay requirements.
Formulation	PBS with 0.05% Proclin300, 50% Glycerol, pH 7.3.
Isotype	IgG
Molecular Weight	Protein Mw: 213kDa Observed Mw: 250kDa
Storage Instruction	Store at -20°C for up to 1 year from the date of receipt, and avoid repeat freeze-thaw cycles.

TARGET INFORMATION

Gene ID	23067
Gene Symbol	SETD1B
UniProt ID	SET1B_HUMAN
Immunogen Region	1673-1770
Immunogen Sequence	SEFEEMTILYDIWNGGIDEE DIRFLCVTYERLLQQDNGMD WLNDTLWVYHPSTSLSSAKK KKRDDGIREHVTGCARSEGF YTIDKKDKLRYLNSSRAS
Specificity	Recombinant fusion protein containing a sequence corresponding to amino acids 1673-1770 of human SETD1B (NP_001340274.1).

ADDITIONAL INFORMATION

Note STRICTLY FOR FURTHER SCIENTIFIC RESEARCH USE ONLY (RUO). MUST NOT TO BE USED IN DIAGNOSTIC OR THERAPEUTIC APPLICATIONS.



Western blot analysis of various lysates using SETD1B Rabbit polyclonal antibody (STJ11103186) at 1:500 dilution. Secondary antibody: HRP Goat Anti-Rabbit IgG (H+L) (STJS000856) at 1:10000 dilution. Lysates/proteins: 25 Mu g per lane. Blocking buffer: 3% nonfat dry milk in TBST. Detection: ECL Enhanced Kit. Exposure time: 180s.