

Anti-Pan-Tri-Methyl-Lysine antibody (STJ11103178)

GENERAL INFORMATION

Product Type	Primary antibodies
Applications	WB/IP/ELISA/ChIP
Host / Source	Rabbit
Reactivity	Human/Mouse/Rat/Other

PRODUCT PROPERTIES

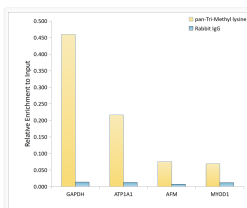
Clonality	Polyclonal
Concentration	Lot specific
Conjugation	Unconjugated
Purification	Affinity purification
Dilution Range	WB:1:500-1:1000 IP:0.5 Mu g-4 Mu g antibody for 200 Mu g-400 Mu g extracts of whole cells ELISA:Recommended starting concentration is 1 Mu g/mL. Please optimize the concentration based on your specific assay requirements. ChIP:3 Mu g anti
Formulation	PBS with 0.05% Proclin300, 50% Glycerol, pH7.3.
Isotype	IgG
Molecular Weight	15-74kDa
Storage Instruction	Store at -20°C for up to 1 year from the date of receipt, and avoid repeat freeze-thaw cycles.

TARGET INFORMATION

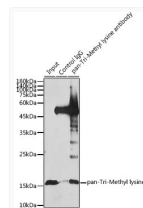
Specificity	A synthetic peptide corresponding to a sequence containing Tri-methylated K.
-------------	--

ADDITIONAL INFORMATION

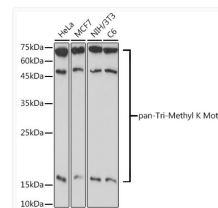
Note STRICTLY FOR FURTHER SCIENTIFIC RESEARCH USE ONLY (RUO). MUST NOT TO BE USED IN DIAGNOSTIC OR THERAPEUTIC APPLICATIONS.



Chromatin immunoprecipitation analysis of extracts of HeLa cells, using pan-Tri-Methyl lysine antibody (STJ11103178) and rabbit IgG. The amount of immunoprecipitated DNA was checked by quantitative PCR. Histogram was constructed by the ratios of the immunoprecipitated DNA to the input.



Immunoprecipitation analysis of 1.5mg extracts of HeLa cells using 30ug pan-Tri-Methyl lysine antibody (STJ11103178). Western blot was performed from the immunoprecipitate using TriMethyl-Histone H3-K27 antibody (A2363) at a dilution of 1:1000.



Western blot analysis of various lysates using pan-Tri-Methyl lysine Rabbit polyclonal antibody (STJ11103178) at 1:1000 dilution. Secondary antibody: HRP Goat Anti-Rabbit IgG (H+L) (STJS000856) at 1:10000 dilution. Lysates/proteins: 25 Mu g per lane. Blocking buffer: 3% nonfat dry milk in TBST. Detection: ECL Basic Kit. Exposure time: 60s.