

Anti-SARS-CoV-2-Spike S2 ECD antibody (686-1214) (STJ11103173)

GENERAL INFORMATION

| | |
|---------------|-----------------------|
| Product Type | Primary antibodies |
| Applications | WB/DB/IF/ICC/IP/ELISA |
| Host / Source | Rabbit |
| Reactivity | Human/SARS-CoV-2 |

PRODUCT PROPERTIES

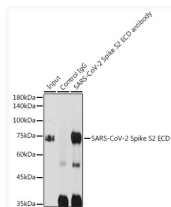
| | |
|---------------------|---|
| Clonality | Polyclonal |
| Concentration | Lot specific |
| Conjugation | Unconjugated |
| Purification | Affinity purification |
| Dilution Range | WB:1:2000-1:6000 DB:1:500-1:2000 IF/CC:1:50-1:200 IP:0.5 Mu g-4 Mu g antibody for 200 Mu g-400 Mu g extracts of whole cells ELISA:Recommended starting concentration is 1 Mu g/mL. Please optimize the concentration based on your specif |
| Formulation | PBS with 0.01% Thimerosal, 50% Glycerol, pH 7.3. |
| Isotype | IgG |
| Molecular Weight | Protein Mw: 141kDa Observed Mw: 75kDa |
| Storage Instruction | Store at-20°C for up to 1 year from the date of receipt, and avoid repeat freeze-thaw cycles. |

TARGET INFORMATION

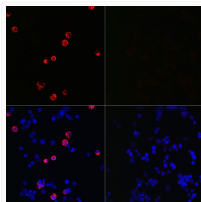
| | |
|--------------------|---|
| Immunogen Region | 686-1214 |
| Immunogen Sequence | SVASQSIAYTMSLGAENSV AYSNNSIAIPTNFTISVTTE ILPVSMTKTSVDCTMYICGD STECNLLQYGSFCTQLNR ALTGIAVEQDKNTQEVFAQV KQIYKTPPIKDFGGFNFSQI LPDPSKPKRSFIEDLLFNK VTLADAGFIKQYGDCLGDIARDLCAQKFNGLTVLPPLL TDEMIAQYTSALLAGTITSG WTFGAGAALQIPFAMQMAYR FNGIGVTQNVLYENQKLI |
| Specificity | A synthetic peptide corresponding to a sequence within amino acids 686-1214 of coronavirus Spike S2 ECD (YP_009724390.1). |

ADDITIONAL INFORMATION

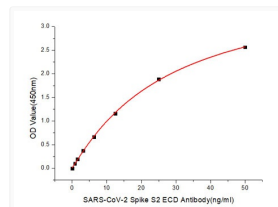
Note STRICTLY FOR FURTHER SCIENTIFIC RESEARCH USE ONLY (RUO). MUST NOT TO BE USED IN DIAGNOSTIC OR THERAPEUTIC APPLICATIONS.



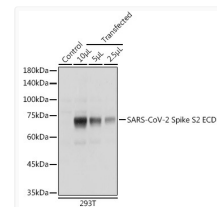
Immunoprecipitation analysis of 300 Mu g extracts of 293T cells using 3 Mu g SARS-CoV-2 Spike S2 ECD antibody (STJ11103173). Western blot was performed from the immunoprecipitate using SARS-CoV-2 Spike S2 ECD antibody (STJ11103173) at a dilution of 1:5000.



Immunofluorescence analysis of 293T cells transfected with SARS-CoV-2 Spike S2 ECD fusion protein (top left) and untreated 293T cells (top right) use SARS-CoV-2 Spike S2 ECD Rabbit polyclonal antibody (STJ11103173) at dilution of 1:100 (40x lens). Secondary antibody: Cy3 Goat Anti-Rabbit IgG (H+L) at 1:500 dilution. Blue: DAPI for nuclear staining.



Immobilized Recombinant SARS-CoV-2 S-ECD-PFS Protein (RP01283LQ) at 1 Mu g/mL (100 Mu L/well) can bind SARS-CoV-2 Spike S2 ECD Rabbit polyclonal antibody (STJ11103173) with a linear range of 3.12-50ng/mL.



Western blot analysis of extracts of normal 293T cells transfected with Spike S2 ECD Protein, using SARS-CoV-2 Spike S2 ECD Rabbit polyclonal antibody (STJ11103173) at 1:5000 dilution. Secondary antibody: HRP Goat Anti-Rabbit IgG (H+L) (STJS000856) at 1:10000 dilution. Lysates/proteins: 25 Mu g per lane. Blocking buffer: 3% nonfat dry milk in TBST. Detection: ECL Enhanced Kit. Exposure time: 1s.