

Anti-SATB2 antibody (200-300) [S1MR] (STJ11103171)

GENERAL INFORMATION

Product Type	Primary antibodies
Applications	WB/IHC-P/IP/ELISA
Host / Source	Rabbit
Reactivity	Human/Mouse/Rat

PRODUCT PROPERTIES

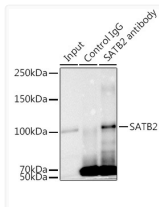
Clonality	Monoclonal
Concentration	Lot specific
Conjugation	Unconjugated
Purification	Affinity purification
Dilution Range	WB:1:100-1:500 IHC-P:1:50-1:200 IP:0.5 Mu g-4 Mu g antibody for 200 Mu g-400 Mu g extracts of whole cells ELISA:Recommended starting concentration is 1 Mu g/mL. Please optimize the concentration based on your specific assay requirements.
Formulation	PBS with 0.02% Sodium Azide, 0.05% BSA, 50% Glycerol, pH 7.3.
Isotype	IgG
Molecular Weight	Protein Mw: 83kDa Observed Mw: 100kDa
Storage Instruction	Store at -20°C for up to 1 year from the date of receipt, and avoid repeat freeze-thaw cycles.

TARGET INFORMATION

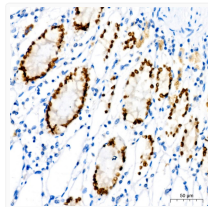
Gene ID	23314
Gene Symbol	SATB2
UniProt ID	SATB2_HUMAN
Immunogen Region	200-300
Immunogen Sequence	SMISSIVNSTYYANVSATKC QEFGRWYKYYKKIKVERVER ENLSDYCVLGQRPMHLPNMN QLASLGKTNEQSPHSQIHHS TPIRNQVPALQPIMSPGLLS P
Specificity	A synthetic peptide corresponding to a sequence within amino acids 200-300 of human SATB2 (Q9UPW6).

ADDITIONAL INFORMATION

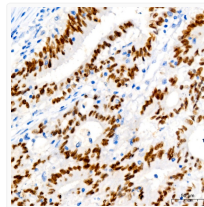
Note STRICTLY FOR FURTHER SCIENTIFIC RESEARCH USE ONLY (RUO). MUST NOT TO BE USED IN DIAGNOSTIC OR THERAPEUTIC APPLICATIONS.



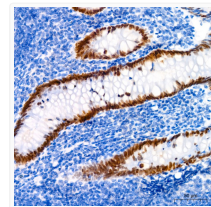
Immunoprecipitation analysis of 300 Mu g extracts of K-562 cells using 3 Mu g SATB2 antibody (STJ11103171). Western blot was performed from the immunoprecipitate using SATB2 antibody (STJ11103171) at a dilution of 1:1000.



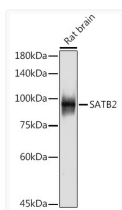
Immunohistochemistry analysis of SATB2 in paraffin-embedded human colon using SATB2 Rabbit monoclonal antibody (STJ11103171) at dilution of 1:50 (40x lens). Perform high pressure antigen retrieval with 10 mM Tris/EDTA buffer pH 9.0 before commencing with immunohistochemistry staining protocol.



Immunohistochemistry analysis of SATB2 in paraffin-embedded human colon carcinoma using SATB2 Rabbit monoclonal antibody (STJ11103171) at dilution of 1:50 (40x lens). Perform high pressure antigen retrieval with 10 mM Tris/EDTA buffer pH 9.0 before commencing with immunohistochemistry staining protocol.



Immunohistochemistry analysis of SATB2 in paraffin-embedded human appendix using SATB2 Rabbit monoclonal antibody (STJ11103171) at dilution of 1:50 (40x lens). Perform high pressure antigen retrieval with 10 mM Tris/EDTA buffer pH 9.0 before commencing with immunohistochemistry staining protocol.



Western blot analysis of lysates from Rat brain, using SATB2 Rabbit monoclonal antibody (STJ11103171) at 1:500 dilution. Secondary antibody: HRP Goat Anti-Rabbit IgG (H+L) (STJS000856) at 1:10000 dilution. Lysates/proteins: 25 Mu g per lane. Blocking buffer: 3% nonfat dry milk in TBST. Detection: ECL Basic Kit. Exposure time: 180s.