

Anti-Talin 2 antibody (350-450) [S1MR] (STJ11103151)

GENERAL INFORMATION

Product Type	Primary antibodies
Applications	WB/IHC-P/IF/ICC/ELISA
Host / Source	Rabbit
Reactivity	Human/Mouse/Rat

PRODUCT PROPERTIES

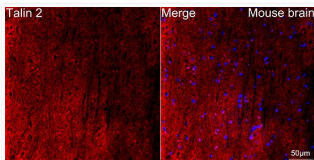
Clonality	Monoclonal
Concentration	Lot specific
Conjugation	Unconjugated
Purification	Affinity purification
Dilution Range	WB:1:1000-1:6000 IHC-P:1:500-1:2000 IF/CC:1:100-1:400 ELISA:Recommended starting concentration is 1 μ g/mL. Please optimize the concentration based on your specific assay requirements.
Formulation	PBS with 0.02% Sodium Azide, 0.05% BSA, 50% Glycerol, pH 7.3.
Isotype	IgG
Molecular Weight	Protein Mw: 272kDa Observed Mw: 272kDa
Storage Instruction	Store at -20°C for up to 1 year from the date of receipt, and avoid repeat freeze-thaw cycles.

TARGET INFORMATION

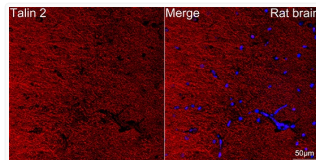
Gene ID	83660
Gene Symbol	TLN2
UniProt ID	TLN2_HUMAN
Immunogen Region	350-450
Immunogen Sequence	VLQEWPLTTVKRWAASPKSF TLDGFEYQESYYSVQTTEGE QISQLIAGYIDILKKKQSK DRFGLEGDEESTMLEESVSP KKSTILQQQFNRTGKAEHGS V
Specificity	A synthetic peptide corresponding to a sequence within amino acids 350-450 of human Talin 2 (Q9Y4G6).

ADDITIONAL INFORMATION

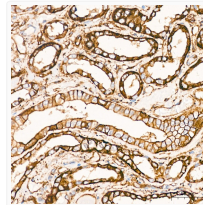
Note STRICTLY FOR FURTHER SCIENTIFIC RESEARCH USE ONLY (RUO). MUST NOT TO BE USED IN DIAGNOSTIC OR THERAPEUTIC APPLICATIONS.



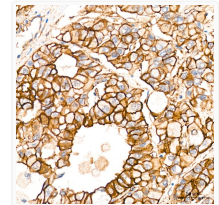
Confocal imaging of paraffin-embedded Mouse brain tissue using Talin 2 Rabbit monoclonal antibody (STJ11103151, dilution 1:100) followed by a further incubation with Cy3 Goat Anti-Rabbit IgG (H+L) (dilution 1:500) (Red). DAPI was used for nuclear staining (Blue). Objective: 40x. Perform microwave antigen retrieval with 0. 01 M citrate buffer (pH 6. 0) prior to IF staining.



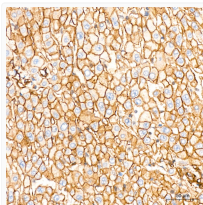
Confocal imaging of paraffin-embedded Rat brain tissue using Talin 2 Rabbit monoclonal antibody (STJ11103151, dilution 1:100) followed by a further incubation with Cy3 Goat Anti-Rabbit IgG (H+L) (dilution 1:500) (Red). DAPI was used for nuclear staining (Blue). Objective: 40x. Perform microwave antigen retrieval with 0. 01 M citrate buffer (pH 6. 0) prior to IF staining.



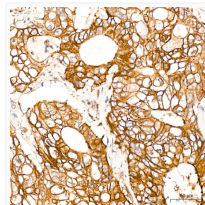
Immunohistochemistry analysis of Talin 2 in paraffin-embedded human kidney tissue using Talin 2 Rabbit monoclonal antibody (STJ11103151) at a dilution of 1:500 (40x lens). High pressure antigen retrieval was performed with 0. 01 M citrate buffer (pH 6. 0) prior to immunohistochemistry staining.



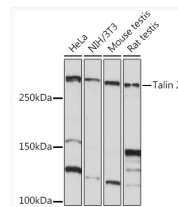
Immunohistochemistry analysis of Talin 2 in paraffin-embedded human liver cancer tissue using Talin 2 Rabbit monoclonal antibody (STJ11103151) at a dilution of 1:500 (40x lens). High pressure antigen retrieval was performed with 0. 01 M citrate buffer (pH 6. 0) prior to immunohistochemistry staining.



Immunohistochemistry analysis of Talin 2 in paraffin-embedded human liver tissue using Talin 2 Rabbit monoclonal antibody (STJ11103151) at a dilution of 1:500 (40x lens). High pressure antigen retrieval was performed with 0. 01 M citrate buffer (pH 6. 0) prior to immunohistochemistry staining.



Immunohistochemistry analysis of Talin 2 in paraffin-embedded human colon carcinoma tissue using Talin 2 Rabbit monoclonal antibody (STJ11103151) at a dilution of 1:500 (40x lens). High pressure antigen retrieval was performed with 0. 01 M citrate buffer (pH 6. 0) prior to immunohistochemistry staining.



Western blot analysis of various lysates using Talin 2 Rabbit monoclonal antibody (STJ11103151) at 1:1000 dilution. Secondary antibody: HRP Goat Anti-Rabbit IgG (H+L) (STJS000856) at 1:10000 dilution. Lysates/proteins: 25 μ g per lane. Blocking buffer: 3% nonfat dry milk in TBST. Detection: ECL Basic Kit. Exposure time: 10s.