

Anti-Tubulin beta-1 chain antibody (352-451) [S7MR] (STJ11103147)

GENERAL INFORMATION

Product Type	Primary antibodies
Applications	WB/IF/ICC/ELISA
Host / Source	Rabbit
Reactivity	Human/Mouse/Rat/Cow/Dog/Monkey

PRODUCT PROPERTIES

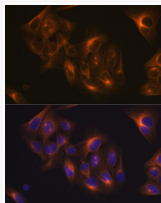
Clonality	Monoclonal
Concentration	Lot specific
Conjugation	Unconjugated
Purification	Affinity purification
Dilution Range	WB:1:500-1:2000 IF/CC:1:50-1:200 ELISA:Recommended starting concentration is 1 µg/mL. Please optimize the concentration based on your specific assay requirements.
Formulation	PBS with 0.02% Sodium Azide, 0.05% BSA, 50% Glycerol, pH 7.3.
Isotype	IgG
Molecular Weight	Protein Mw: 50kDa Observed Mw: 50kDa
Storage Instruction	Store at -20°C for up to 1 year from the date of receipt, and avoid repeat freeze-thaw cycles.

TARGET INFORMATION

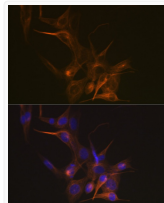
Gene ID	81027
Gene Symbol	TUBB1
UniProt ID	TBB1_HUMAN
Immunogen Region	352-451
Immunogen Sequence	AVCDIPPRGLSMAATFIGNN TAIQEIFNRVSEHFSAMFKR KAFVHWYTSEGMDINEFGEA ENNIHDLVSEYQQFQDAKAV LEEDEEVTEEAEMEPEDKGH
Specificity	A synthetic peptide corresponding to a sequence within amino acids 352-451 of human Tubulin beta-1 chain (Q9H4B7).

ADDITIONAL INFORMATION

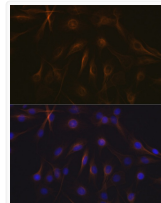
Note STRICTLY FOR FURTHER SCIENTIFIC RESEARCH USE ONLY (RUO). MUST NOT TO BE USED IN DIAGNOSTIC OR THERAPEUTIC APPLICATIONS.



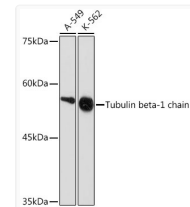
Immunofluorescence analysis of U-2 OS cells using Tubulin beta-1 chain Rabbit monoclonal antibody (STJ11103147) at dilution of 1:100 (40x lens). Blue: DAPI for nuclear staining.



Immunofluorescence analysis of NIH-3T3 cells using Tubulin beta-1 chain Rabbit monoclonal antibody (STJ11103147) at dilution of 1:100 (40x lens). Blue: DAPI for nuclear staining.



Immunofluorescence analysis of C6 cells using Tubulin beta-1 chain Rabbit monoclonal antibody (STJ11103147) at dilution of 1:100 (40x lens). Blue: DAPI for nuclear staining.



Western blot analysis of extracts of various cell lines, using Tubulin beta-1 chain Rabbit monoclonal antibody (STJ11103147) at 1:1000 dilution. Secondary antibody: HRP Goat Anti-Rabbit IgG (H+L) (STJS000856) at 1:10000 dilution. Lysates/proteins: 25 µg per lane. Blocking buffer: 3% nonfat dry milk in TBST. Detection: ECL Basic Kit. Exposure time: 90s.