

## Anti-CTIP2/BCL11B antibody (450-550) [S6MR] (STJ11103146)

### GENERAL INFORMATION

Product Type	Primary antibodies
Applications	WB/IHC-P/ELISA
Host / Source	Rabbit
Reactivity	Human/Mouse

### PRODUCT PROPERTIES

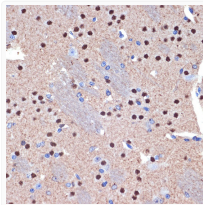
Clonality	Monoclonal
Concentration	Lot specific
Conjugation	Unconjugated
Purification	Affinity purification
Dilution Range	WB:1:500-1:1000 IHC-P:1:50-1:200 ELISA:Recommended starting concentration is 1 Mu g/mL. Please optimize the concentration based on your specific assay requirements.
Formulation	PBS with 0.02% Sodium Azide, 0.05% BSA, 50% Glycerol, pH 7.3.
Isotype	IgG
Molecular Weight	Protein Mw: 96kDa Observed Mw: 120-130kDa
Storage Instruction	Store at -20°C for up to 1 year from the date of receipt, and avoid repeat freeze-thaw cycles.

### TARGET INFORMATION

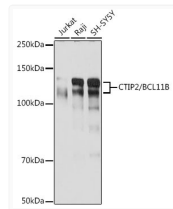
Gene ID	<a href="#">64919</a>
Gene Symbol	<a href="#">BCL11B</a>
UniProt ID	<a href="#">BC11B_HUMAN</a>
Immunogen Region	450-550
Immunogen Sequence	TGEKPYKQLCDHACSQASK LKRHMKTHMHKAGSLAGRSD DGLSAASSPEPGTSELAGEG LKAADGDFRHHESDPSLGHE PEEDEEEEEEEEEELLLENE S
Specificity	A synthetic peptide corresponding to a sequence within amino acids 450-550 of human CTIP2/BCL11B (Q9C0K0).

### ADDITIONAL INFORMATION

Note STRICTLY FOR FURTHER SCIENTIFIC RESEARCH USE ONLY (RUO). MUST NOT TO BE USED IN DIAGNOSTIC OR THERAPEUTIC APPLICATIONS.



Immunohistochemistry analysis of paraffin-embedded mouse brain using CTIP2/BCL11B Rabbit monoclonal antibody (STJ11103146) at dilution of 1:100 (40x lens). Perform microwave antigen retrieval with 10 mM Tris/EDTA buffer pH 9.0 before commencing with immunohistochemistry staining protocol.



Western blot analysis of extracts of various cell lines, using CTIP2/BCL11B antibody (STJ11103146) at 1:1000 dilution. Secondary antibody: HRP Goat Anti-Rabbit IgG (H+L) (STJS000856) at 1:10000 dilution. Lysates/proteins: 25 Mu g per lane. Blocking buffer: 3% nonfat dry milk in TBST. Detection: ECL Basic Kit. Exposure time: 1s.