

Anti-Mast Cell Tryptase antibody (30-275) [S4MR] (STJ11103144)

GENERAL INFORMATION

Product Type	Primary antibodies
Applications	WB/IHC-P/ELISA
Host / Source	Rabbit
Reactivity	Human/Mouse/Rat

PRODUCT PROPERTIES

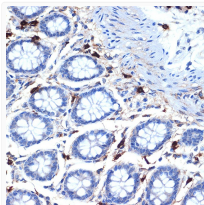
Clonality	Monoclonal
Concentration	Lot specific
Conjugation	Unconjugated
Purification	Affinity purification
Dilution Range	WB:1:1000-1:2000 IHC-P:1:100-1:1000 ELISA:Recommended starting concentration is 1 Mu g/mL. Please optimize the concentration based on your specific assay requirements.
Formulation	PBS with 0.02% Sodium Azide, 0.05% BSA, 50% Glycerol, pH 7.3.
Isotype	IgG
Molecular Weight	Protein Mw: 31kDa Observed Mw: 31kDa
Storage Instruction	Store at -20°C for up to 1 year from the date of receipt, and avoid repeat freeze-thaw cycles.

TARGET INFORMATION

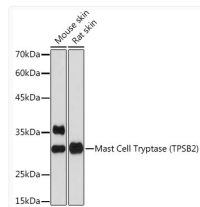
Gene ID	7177
Gene Symbol	TPSAB1
UniProt ID	TRYB1_HUMAN
Immunogen Region	30-275
Immunogen Sequence	GIVGGQEAPRSKWPWQVSLR VHGPYWMHFCGGSLIHPQWV LTAACHVGPDPVKDLAALRVQ LREQHLYYQDQLLPVSRIV HPQFYTAQIGADIALLEEE PVNVSSHVHTVTLPPASETF PPGMPCWVTGWGDVNDERL PPPFPLKQVKVPIMENHICD AKYHLGAYTGDDVRIVRDDM LCAGNTRRDSCQGDSSGGPLV CKVNGTWLQAGVSVWGEGCA QPNRPGIYTRVITYLDWIH
Specificity	Recombinant fusion protein containing a sequence corresponding to amino acids 30-275 of human Mast Cell Tryptase (TPSB2) (TPSB2) (P20231).

ADDITIONAL INFORMATION

Note STRICTLY FOR FURTHER SCIENTIFIC RESEARCH USE ONLY (RUO). MUST NOT TO BE USED IN DIAGNOSTIC OR THERAPEUTIC APPLICATIONS.



Immunohistochemistry analysis of Mast Cell Tryptase (TPSB2) in paraffin-embedded human colon using Mast Cell Tryptase (TPSB2) Rabbit monoclonal antibody (STJ11103144) at dilution of 1:100 (40x lens). Perform microwave antigen retrieval with 10 mM Tris/EDTA buffer pH 9.0 before commencing with immunohistochemistry staining protocol.



Western blot analysis of various lysates using Mast Cell Tryptase (TPSB2) Rabbit monoclonal antibody (STJ11103144) at 1:1000 dilution. Secondary antibody: HRP Goat Anti-Rabbit IgG (H+L) (STJS000856) at 1:10000 dilution. Lysates/proteins: 25 Mu g per lane. Blocking buffer: 3% nonfat dry milk in TBST. Detection: ECL Basic Kit. Exposure time: 90s.