

Anti-SRD5A2 antibody (1-100) [S8MR] (STJ11103118)

GENERAL INFORMATION

Product Type	Primary antibodies
Applications	WB/IF/ICC/ELISA
Host / Source	Rabbit
Reactivity	Human/Mouse/Rat

PRODUCT PROPERTIES

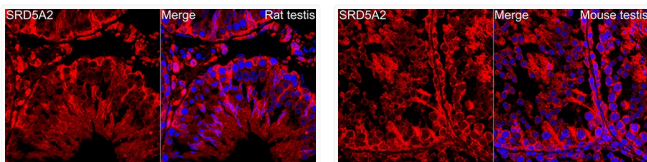
Clonality	Monoclonal
Concentration	Lot specific
Conjugation	Unconjugated
Purification	Affinity purification
Dilution Range	WB:1:1000-1:2000 IF/CC:1:100-1:400 ELISA:Recommended starting concentration is 1 Mu g/mL. Please optimize the concentration based on your specific assay requirements.
Formulation	PBS with 0.02% Sodium Azide, 0.05% BSA, 50% Glycerol, pH 7.3.
Isotype	IgG
Molecular Weight	Protein Mw: 28kDa Observed Mw: 28kDa
Storage Instruction	Store at -20°C for up to 1 year from the date of receipt, and avoid repeat freeze-thaw cycles.

TARGET INFORMATION

Gene ID	6716
Gene Symbol	SRD5A2
UniProt ID	S5A2_HUMAN
Immunogen Region	1-100
Immunogen Sequence	MQVQCQSPVLGASATLVAL GALALYVAKPSGYGKHTESL KPAATRLPARAAWFLQELPS FAVPAGILARQPLSLFGPPG TVLLGLFCVHYFHRTFVYSL
Specificity	A synthetic peptide corresponding to a sequence within amino acids 1-100 of human SRD5A2 (P31213).

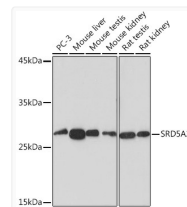
ADDITIONAL INFORMATION

Note STRICTLY FOR FURTHER SCIENTIFIC RESEARCH USE ONLY (RUO). MUST NOT TO BE USED IN DIAGNOSTIC OR THERAPEUTIC APPLICATIONS.



Immunofluorescence analysis of paraffin-embedded rat testis using SRD5A2 Rabbit monoclonal antibody (STJ11103118) at dilution of 1:100 (40x lens). Secondary antibody: Cy3 Goat Anti-Rabbit IgG (H+L) at 1:500 dilution. Blue: DAPI for nuclear staining.

Immunofluorescence analysis of paraffin-embedded mouse testis using SRD5A2 Rabbit monoclonal antibody (STJ11103118) at dilution of 1:100 (40x lens). Secondary antibody: Cy3 Goat Anti-Rabbit IgG (H+L) at 1:500 dilution. Blue: DAPI for nuclear staining.



Western blot analysis of various lysates using SRD5A2 Rabbit monoclonal antibody (STJ11103118) at 1:1000 dilution. Secondary antibody: HRP Goat Anti-Rabbit IgG (H+L) (STJS000856) at 1:10000 dilution. Lysates/proteins: 25 Mu g per lane. Blocking buffer: 3% nonfat dry milk in TBST. Detection: ECL Basic Kit. Exposure time: 180s.