

Anti-Rad21 antibody (532-631) [S1MR] (STJ11103111)

GENERAL INFORMATION

Product Type	Primary antibodies
Applications	WB/ELISA/ChIP/ChIP-seq
Host / Source	Rabbit
Reactivity	Human/Mouse/Rat

PRODUCT PROPERTIES

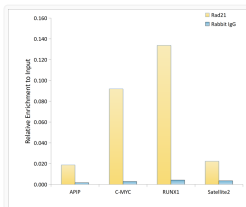
Clonality	Monoclonal
Concentration	Lot specific
Conjugation	Unconjugated
Purification	Affinity purification
Dilution Range	WB:1:1000-1:2000 ELISA:Recommended starting concentration is 1 Mu g/mL. Please optimize the concentration based on your specific assay requirements. ChIP:5 Mu g antibody for 10 Mu g-15 Mu g of Chromatin ChIP-seq:1:50-1:100
Formulation	PBS with 0.02% Sodium Azide, 0.05% BSA, 50% Glycerol, pH 7.3.
Isotype	IgG
Molecular Weight	Protein Mw: 72kDa Observed Mw: 130kDa
Storage Instruction	Store at -20°C for up to 1 year from the date of receipt, and avoid repeat freeze-thaw cycles.

TARGET INFORMATION

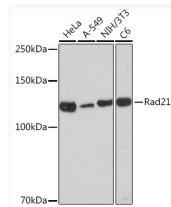
Gene ID	5885
Gene Symbol	RAD21
UniProt ID	RAD21_HUMAN
Immunogen Region	532-631
Immunogen Sequence	EKEDDEEEEDASGGDQDQ EERRWNRKRTQQLHGLQRAL AKTGAESISLLELCRNTNRK QAAAKFYSLVLLKQQAIEL TQEEPYSDIATPGPRFHII
Specificity	A synthetic peptide corresponding to a sequence within amino acids 532-631 of human Rad21 (O60216).

ADDITIONAL INFORMATION

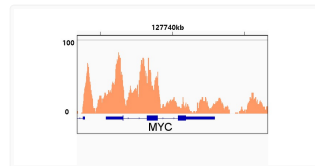
Note STRICTLY FOR FURTHER SCIENTIFIC RESEARCH USE ONLY (RUO). MUST NOT TO BE USED IN DIAGNOSTIC OR THERAPEUTIC APPLICATIONS.



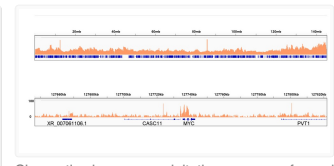
Chromatin immunoprecipitation analysis of extracts of A-549 cells, using Rad21 antibody (STJ11103111) and rabbit IgG. The amount of immunoprecipitated DNA was checked by quantitative PCR. Histogram was constructed by the ratios of the immunoprecipitated DNA to the input.



Western blot analysis of various lysates using Rad21 Rabbit monoclonal antibody (STJ11103111) at 1:1000 dilution. Secondary antibody: HRP Goat Anti-Rabbit IgG (H+L) (STJS000856) at 1:10000 dilution. Lysates/proteins: 25 Mu g per lane. Blocking buffer: 3% nonfat dry milk in TBST. Detection: ECL Enhanced Kit. Exposure time: 180s.



Chromatin immunoprecipitation was performed with 10.7 Mu g of cross-linked chromatin from A-549 cells using 5 Mu g of Rad21 Rabbit monoclonal antibody (STJ11103111). DNA libraries were prepared using Scale ssDNA-seq Lib Prep Kit for Illumina V2 (RK20228). The ChIP sequencing results indicate the enrichment pattern of Rad21 in the representative genomic region surrounding MYC gene.



Chromatin immunoprecipitation was performed with 10.7 Mu g of cross-linked chromatin from A-549 cells using 5 Mu g of Rad21 Rabbit monoclonal antibody (STJ11103111). DNA libraries were prepared using Scale ssDNA-seq Lib Prep Kit for Illumina V2 (RK20228). The ChIP sequencing results indicate the enrichment pattern of Rad21 across chromosome 8 (upper panel) and the genomic region encompassing MYC, a representative gene enriched in Rad21 (lower panel).