

Anti-CTRL antibody (165-264) [S4MR] (STJ11103074)

GENERAL INFORMATION

Product Type	Primary antibodies
Applications	WB/IHC-P/IF/ICC/ELISA
Host / Source	Rabbit
Reactivity	Human/Mouse/Rat

PRODUCT PROPERTIES

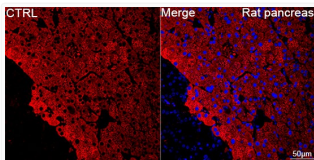
Clonality	Monoclonal
Concentration	Lot specific
Conjugation	Unconjugated
Purification	Affinity purification
Dilution Range	WB:1:5000-1:8000 IHC-P:1:50-1:200 IF/CC:1:50-1:200 ELISA:Recommended starting concentration is 1 Mu g/mL. Please optimize the concentration based on your specific assay requirements.
Formulation	PBS with 0.02% Sodium Azide, 0.05% BSA, 50% Glycerol, pH 7.3.
Isotype	IgG
Molecular Weight	Protein Mw: 28kDa Observed Mw: 28kDa
Storage Instruction	Store at -20°C for up to 1 year from the date of receipt, and avoid repeat freeze-thaw cycles.

TARGET INFORMATION

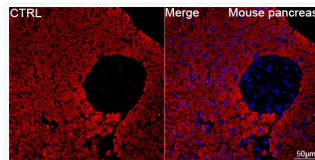
Gene ID	1506
Gene Symbol	CTRL
UniProt ID	CTRL_HUMAN
Immunogen Region	165-264
Immunogen Sequence	GVGNVTPAHLQQVALPLVTV NQCRQYWSSITDSMICAGG AGASSCQGDSSGGLVCQKGN TWVLIGIVSWGTKNCNVRAP AVYTRVSKFSTWINQVIAYN
Specificity	A synthetic peptide corresponding to a sequence within amino acids 165-264 of human CTRL (P40313).

ADDITIONAL INFORMATION

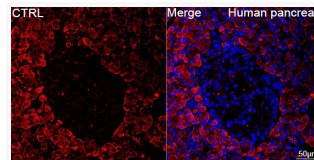
Note STRICTLY FOR FURTHER SCIENTIFIC RESEARCH USE ONLY (RUO). MUST NOT TO BE USED IN DIAGNOSTIC OR THERAPEUTIC APPLICATIONS.



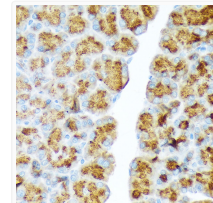
Confocal imaging of paraffin-embedded Rat pancreas tissue using CTRL Rabbit monoclonal antibody (STJ11103074, dilution 1:100) followed by a further incubation with Cy3 Goat Anti-Rabbit IgG (H+L) (dilution 1:500) (Red). DAPI was used for nuclear staining (Blue). Objective: 40x. Perform high pressure antigen retrieval with 0.01 M citrate buffer (pH 6.0) prior to IF staining.



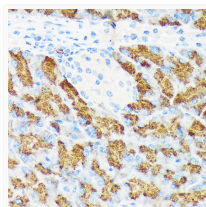
Confocal imaging of paraffin-embedded Mouse pancreas tissue using CTRL Rabbit monoclonal antibody (STJ11103074, dilution 1:100) followed by a further incubation with Cy3 Goat Anti-Rabbit IgG (H+L) (dilution 1:500) (Red). DAPI was used for nuclear staining (Blue). Objective: 40x. Perform high pressure antigen retrieval with 0.01 M citrate buffer (pH 6.0) prior to IF staining.



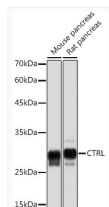
Confocal imaging of paraffin-embedded Human pancreas tissue using CTRL Rabbit monoclonal antibody (STJ11103074, dilution 1:100) followed by a further incubation with Cy3 Goat Anti-Rabbit IgG (H+L) (dilution 1:500) (Red). DAPI was used for nuclear staining (Blue). Objective: 40x. Perform high pressure antigen retrieval with 0.01 M citrate buffer (pH 6.0) prior to IF staining.



Immunohistochemistry analysis of CTRL in paraffin-embedded rat pancreas using CTRL Rabbit monoclonal antibody (STJ11103074) at dilution of 1:100 (40x lens). Perform microwave antigen retrieval with 10 mM Tris/EDTA buffer pH 9.0 before commencing with immunohistochemistry staining protocol.



Immunohistochemistry analysis of CTRL in paraffin-embedded mouse pancreas using CTRL Rabbit monoclonal antibody (STJ11103074) at dilution of 1:100 (40x lens). Perform microwave antigen retrieval with 10 mM Tris/EDTA buffer pH 9.0 before commencing with immunohistochemistry staining protocol.



Western blot analysis of various lysates using CTRL Rabbit monoclonal antibody (STJ11103074) at 1:5000 dilution. Secondary antibody: HRP Goat Anti-Rabbit IgG (H+L) (STJS000856) at 1:10000 dilution. Lysates/proteins: 25 Mu g per lane. Blocking buffer: 3% nonfat dry milk in TBST. Detection: ECL Basic Kit. Exposure time: 1s.