

Anti-Fibrinogen alpha chain antibody (700-800) [S3MR] (STJ11103073)

GENERAL INFORMATION

Product Type	Primary antibodies
Applications	WB/IHC-P/ELISA
Host / Source	Rabbit
Reactivity	Human/Mouse/Rat

PRODUCT PROPERTIES

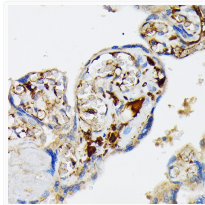
Clonality	Monoclonal
Concentration	Lot specific
Conjugation	Unconjugated
Purification	Affinity purification
Dilution Range	WB:1:1000-1:2000 IHC-P:1:200-1:2000 ELISA:Recommended starting concentration is 1 Mu g/mL. Please optimize the concentration based on your specific assay requirements.
Formulation	PBS with 0.02% Sodium Azide, 0.05% BSA, 50% Glycerol, pH 7.3.
Isotype	IgG
Molecular Weight	Protein Mw: 95kDa Observed Mw: 95kDa
Storage Instruction	Store at -20°C for up to 1 year from the date of receipt, and avoid repeat freeze-thaw cycles.

TARGET INFORMATION

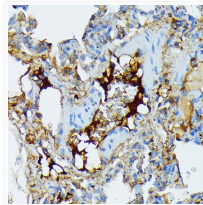
Gene ID	2243
Gene Symbol	FGA
UniProt ID	FIBA_HUMAN
Immunogen Region	700-800
Immunogen Sequence	NDEGEGEFWLGNDYLHLLTQ RGSVLRVELEDWAGNEAYAE YHFRVGSEAEGYALQVSSYE GTAGDALIEGVSVEEGAEYTS HNNMQFSTFDRDADQWEENC A
Specificity	A synthetic peptide corresponding to a sequence within amino acids 700-800 of human Fibrinogen alpha chain (FGA) (FGA) (P02671).

ADDITIONAL INFORMATION

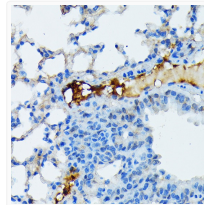
Note STRICTLY FOR FURTHER SCIENTIFIC RESEARCH USE ONLY (RUO). MUST NOT TO BE USED IN DIAGNOSTIC OR THERAPEUTIC APPLICATIONS.



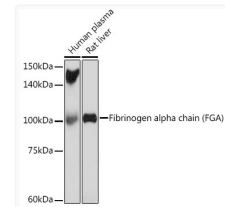
Immunohistochemistry analysis of Fibrinogen alpha chain (FGA) in paraffin-embedded human placenta using Fibrinogen alpha chain (FGA) (FGA) Rabbit monoclonal antibody (STJ11103073) at dilution of 1:100 (40x lens). Perform microwave antigen retrieval with 10 mM Tris/EDTA buffer pH 9.0 before commencing with immunohistochemistry staining protocol.



Immunohistochemistry analysis of Fibrinogen alpha chain (FGA) in paraffin-embedded rat lung using Fibrinogen alpha chain (FGA) (FGA) Rabbit monoclonal antibody (STJ11103073) at dilution of 1:100 (40x lens). Perform microwave antigen retrieval with 10 mM Tris/EDTA buffer pH 9.0 before commencing with immunohistochemistry staining protocol.



Immunohistochemistry analysis of Fibrinogen alpha chain (FGA) in paraffin-embedded mouse lung using Fibrinogen alpha chain (FGA) (FGA) Rabbit monoclonal antibody (STJ11103073) at dilution of 1:100 (40x lens). Perform microwave antigen retrieval with 10 mM Tris/EDTA buffer pH 9.0 before commencing with immunohistochemistry staining protocol.



Western blot analysis of various lysates using Fibrinogen alpha chain (FGA) (FGA) Rabbit monoclonal antibody (STJ11103073) at 1:1000 dilution. Secondary antibody: HRP Goat Anti-Rabbit IgG (H+L) (STJS000856) at 1:10000 dilution. Lysates/proteins: 25 Mu g per lane. Blocking buffer: 3% nonfat dry milk in TBST. Detection: ECL Basic Kit. Exposure time: 180s.