

## Anti-COPA antibody (1-100) [S1MR] (STJ11103071)

### GENERAL INFORMATION

Product Type	Primary antibodies
Applications	WB/IHC-P/ELISA
Host / Source	Rabbit
Reactivity	Human/Mouse/Rat

### PRODUCT PROPERTIES

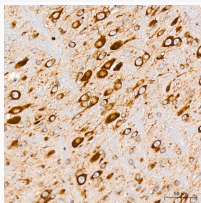
Clonality	Monoclonal
Concentration	Lot specific
Conjugation	Unconjugated
Purification	Affinity purification
Dilution Range	WB:1:500-1:1000 IHC-P:1:50-1:200 ELISA:Recommended starting concentration is 1 Mu g/mL. Please optimize the concentration based on your specific assay requirements.
Formulation	PBS with 0.02% Sodium Azide, 0.05% BSA, 50% Glycerol, pH 7.3.
Isotype	IgG
Molecular Weight	Protein Mw: 138kDa Observed Mw:
Storage Instruction	Store at -20°C for up to 1 year from the date of receipt, and avoid repeat freeze-thaw cycles.

### TARGET INFORMATION

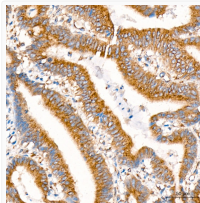
Gene ID	<a href="#">1314</a>
Gene Symbol	<a href="#">COPA</a>
UniProt ID	<a href="#">COPA_HUMAN</a>
Immunogen Region	1-100
Immunogen Sequence	MLTKFETKSARVKGLSFHPK RPWILTSLHNGVIQLWDYRM CTLIDKFDEHDGPVRGIDFH KQQPLFVSGDDYKIKVWNY KLRRCLFTLLGHLDYIRTF
Specificity	A synthetic peptide corresponding to a sequence within amino acids 1-100 of human COPA (P53621).

### ADDITIONAL INFORMATION

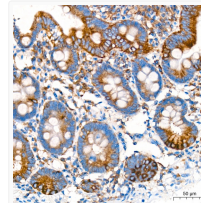
Note STRICTLY FOR FURTHER SCIENTIFIC RESEARCH USE ONLY (RUO). MUST NOT TO BE USED IN DIAGNOSTIC OR THERAPEUTIC APPLICATIONS.



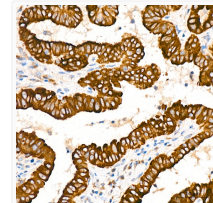
Immunohistochemistry analysis of COPA in paraffin-embedded mouse brain tissue using COPA Rabbit monoclonal antibody (STJ11103071) at a dilution of 1:200 (40x lens). High pressure antigen retrieval was performed with 0.01 M citrate buffer (pH 6.0) prior to immunohistochemistry staining.



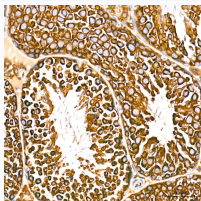
Immunohistochemistry analysis of COPA in paraffin-embedded human colon carcinoma tissue using COPA Rabbit monoclonal antibody (STJ11103071) at a dilution of 1:200 (40x lens). High pressure antigen retrieval was performed with 0.01 M citrate buffer (pH 6.0) prior to immunohistochemistry staining.



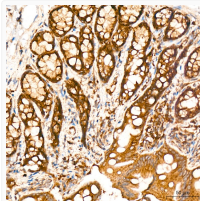
Immunohistochemistry analysis of COPA in paraffin-embedded human colon tissue using COPA Rabbit monoclonal antibody (STJ11103071) at a dilution of 1:200 (40x lens). High pressure antigen retrieval was performed with 0.01 M citrate buffer (pH 6.0) prior to immunohistochemistry staining.



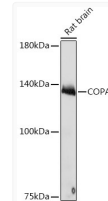
Immunohistochemistry analysis of COPA in paraffin-embedded human thyroid cancer tissue using COPA Rabbit monoclonal antibody (STJ11103071) at a dilution of 1:200 (40x lens). High pressure antigen retrieval was performed with 0.01 M citrate buffer (pH 6.0) prior to immunohistochemistry staining.



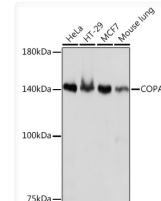
Immunohistochemistry analysis of COPA in paraffin-embedded mouse testis tissue using COPA Rabbit monoclonal antibody (STJ11103071) at a dilution of 1:200 (40x lens). High pressure antigen retrieval was performed with 0.01 M citrate buffer (pH 6.0) prior to immunohistochemistry staining.



Immunohistochemistry analysis of COPA in paraffin-embedded rat colon tissue using COPA Rabbit monoclonal antibody (STJ11103071) at a dilution of 1:200 (40x lens). High pressure antigen retrieval was performed with 0.01 M citrate buffer (pH 6.0) prior to immunohistochemistry staining.



Western blot analysis of lysates from Rat brain, using COPA Rabbit monoclonal antibody (STJ11103071) at 1:1000 dilution. Secondary antibody: HRP Goat Anti-Rabbit IgG (H+L) (STJS000856) at 1:10000 dilution. Lysates/proteins: 25 Mu g per lane. Blocking buffer: 3% nonfat dry milk in TBST. Detection: ECL Basic Kit. Exposure time: 10s.



Western blot analysis of various lysates using COPA Rabbit monoclonal antibody (STJ11103071) at 1:1000 dilution. Secondary antibody: HRP Goat Anti-Rabbit IgG (H+L) (STJS000856) at 1:10000 dilution. Lysates/proteins: 25 Mu g per lane. Blocking buffer: 3% nonfat dry milk in TBST. Detection: ECL Basic Kit. Exposure time: 1s.